



MSU Humphrey Fellowship Alumni with CASID Director Rob Glew at the Humphrey 40th Anniversary Conference in Johannesburg, South Africa

CASID UPDATE

CENTER FOR ADVANCED STUDY OF INTERNATIONAL DEVELOPMENT

2018

MSU Alumni Celebrating 40 Years of the Hubert H. Humphrey Fellowship Program

Michigan State University Humphrey Fellowship Alumni gathered in Johannesburg, South Africa on September 14-16, 2018 to celebrate the 40th Anniversary of the Hubert H. Humphrey Fellowship Program. Pictured above are Kouakou Bruno Tano, Sonia Joao Buvana, Dera Zafindravaka, CASID Director Robert Glew, Djelika Pare, Ventura Mufume, Vasenden Dorsami, Coulibaly Ba Aliou, Paresedes Bakseka, and Angeline Tendai Chikwanda (not pictured). The U.S. Department of State's Bureau of Educational and Cultural Affairs (ECA) and the Institute of International Education (IIE) hosted African Humphrey alumni to celebrate with a conference entitled "African Humphrey Voices: Building a Better Future for Our Continent". Once the current class of Humphrey Fellows finish their individual programs, they will join this network of 5,870 Humphrey Fellows from 162 countries around the world who are advancing in their careers and advancing economic, social, political, educational, agricultural and environmental development in their communities.

President Jimmy Carter initiated the Hubert H. Humphrey Fellowship Program in 1978 to honor the memory of the late senator. Funded by the U.S. Department of State and implemented by the Institute of International Education, the program brings outstanding mid-career professionals from around the world to the United States for a year of study and professional development. The goal of the program is the creation of mutual understanding in order to develop long-lasting relationships between citizens of the United States and their professional counterparts in other countries. For more information about the Hubert H. Humphrey Fellowship Program at MSU, visit the CASID website at casid.isp.msu.edu/humphrey-fellowship-program.

Featured in this Issue:

MSU's Tanzania Partnership Program

MSU's Advancing Young Women Professional Fellows Program

MSU Celebrates Students Selected for Peace Corps Service

CASID International Strategic Partnerships

MICHIGAN STATE
UNIVERSITY

Contents:

Hubert H. Humphrey Fellowship Program 1

MSU Humphrey Alumni Updates 3

Serbian Minister of Finance Visits MSU 4

Zaw Niang Returns to MSU 5

Ashley Green Named Humphrey Fellowship Coordinator 5

Leaders for a Global Society 6

MSU Hosts East African Fellows 8

Meet the CASID Advisory Committee 11

The Tanzania Partnership Program ... 12

MSU Celebrates Students Selected for Peace Corps Service 16

Peace Corps Recruiter Spotlights 17

CASID Supports International Programming at Community Colleges 17

CASID International Strategic Partnerships 18

CASID Offers Two Undergraduate Minors 18

Leaders in Global Engagement Visit MSU 19

Introducing Rachel Elbin 19

Global Land Programme Selects MSU as North American Nodal Office 20

Global Business Club of Mid-Michigan 21

MSU’s Fulbright-Hayes Award Recipients 21

LATTICE International Study Group... 22

FLAS Fellowships 23

World Language Day 23

Faculty Spotlights 24

Alumni News 26

Student Profiles 27

From the Director’s Desk



I am pleased to present the 2018 issue of the CASID Update, a newsletter of our programmatic achievements for 2017. In this issue we highlight the international development-related activities that we have supported during the past year. These activities reflect the strength and depth of Michigan State University faculty and students working on issues of international development.

The Center for Advanced Study of International Development (CASID) is a multidisciplinary unit, organized within the College of Social Science in cooperation with the Office of the Dean of International Studies and Programs and strengthened by the participation of scholars from

a variety of other colleges. CASID works to facilitate and catalyze MSU faculty research and scholarship in fields related to international development. The center supports MSU faculty and students in the creation, dissemination, and application of knowledge about international development.

CASID also promotes undergraduate and graduate programs focusing on issues of international development, works with academic units to ensure continued availability and quality of relevant course offerings, coordinates issue-oriented interest groups, and supports scholarly presentations and outreach programming. A graduate specialization in international development and an undergraduate minor in global studies in social science are available to interested students.

CASID seeks to advance knowledge and transform lives through collaborative learning and responsive engagement with peoples and communities around the globe. We look forward to continuing our support of faculty and student research and scholarship in the coming year and the exciting opportunities that lay ahead.

Robert S. Glew, PhD
Director

Center for Advanced Study of International Development

Robert S. Glew
Director

Andrea Allen
Associate Director

John Bonnell
Program Director, Tanzania Partnership Program

Jennifer Brewer
International Program Coordinator and Project Manager, Tanzania Partnership Program

Bárbara Cernadas Doty
International Program and Financial Coordinator

Helen J. Farr
Office Assistant

Beth Mugavero
Program Manager, Humphrey Fellowship Program

Chad Papa
Peace Corps Recruiter

Kelsey McClure
Peace Corps Recruiter and CASID Communications

Rachel Elbin
Research Assistant, Foreign Language and Area Studies Fellowship Program

MSU Humphrey Alumni Updates

Asad Aleem, Afghanistan
Hubert H. Humphrey Fellow 2003-4



After completing my rewarding Humphrey Year at MSU in 2003-2004, I continued my professional affiliation with the World Bank through November 2004 in Washington DC. Thereafter, in December 2004, I was recruited by the Asian Development Bank (ADB) and have been part of the ADB team ever since. I work in infrastructure financing sector and currently I am the Senior Energy Specialist responsible for ADB’s energy investments and programs in Afghanistan, Pakistan, and Turkmenistan. During my 14-year stint with ADB, I have been based in ADB’s offices in Afghanistan, Pakistan and the Philippines.

My work in a fragile and post conflict environment in Afghanistan has been quite fulfilling but challenging. After security, access to energy is the highest priority of households and businesses in Afghanistan and ADB’s investments in Afghanistan since 2005 have reduced this infrastructure deficit. Lack of energy supplies and the demand–supply imbalance constrain growth and income opportunities; create disparities in economic development;

and fuel ethnic and regional tensions, insecurity, and discontent.

I believe my Humphrey year proved to be a life changer and spearheaded my career in the development work. My training (inside and outside classrooms) and exposure in the US provided me the requisite confidence take my personal and professional challenges head on by looking squarely into the future.



with Bill Hammink, Mission Director for Afghanistan at USAID (2014-15)

Coulibaly Ba Aliou, Mauritania
Hubert H. Humphrey Fellow 2015-16

Ba Aliou Coulibaly is a 2015 Hubert H. Humphrey Alumni from Mauritania. He works as the National Coordinator of Publish What You Pay (PWYP), an organization advocating for more transparency in the extractive sector. In this position he contributes the elaboration and implementation of projects related to local communities’ rights. Prior to joining PWYP, Coulibaly worked as a communication officer for Oxfam GB, a humanitarian NGO.

As a Humphrey Fellow for the 2015-16 academic year, Coulibaly produced research papers on the correlation between extractive industries and community development in resource-rich countries in Africa. During his professional affiliation, Coulibaly worked as a consultant at the World

Bank Governance Department in Washington D.C. and produced a governance note on the management of oil and gas contracts in Mauritania and Senegal.

After the Humphrey Fellowship, Coulibaly returned to his home country, Mauritania. In addition to his traditional civil society activities in the Publish What You Pay, Coulibaly conducted an advocacy campaign to help the rural communities in the south of Mauritania to face the impact of desertification and climate change. This action resulted in the organization of a dry season agricultural campaign for the first time in Kaédi in more than 30 years.

On extractive issues, Coulibaly’s opinion has become prominent for most of the decision makers (Ministry and Members of the parliament) and

also the major media in Mauritania. Recently, Coulibaly has been solicited to contribute as an assistant professor in the prestigious international Natural Resources Governance Program at the University of Nouakchott.



Humphrey Fellows Building International Partnerships:

Serbian Minister of Finance Dušan Vujović Visits

On April 25, 2017, Minister of Finance in the Republic of Serbia, Dušan Vujović, PhD, presented a lecture entitled: “Developments in the Serbian Economy: The Progress of Ongoing Fiscal Consolidation and Broader Reforms”. Participants of the lecture included members of the 2016-2017 Humphrey Fellow’s cohort.

Dušan Vujović has served as the minister of finance in the Republic of Serbia since August 2014. Previously, he was minister of economy. Dr. Vujović is a professor



at Faculty of Economics, Finance and Administration at the Singidunum University, Belgrade and an affiliate MOC faculty member of the institute for Strategy and Competitiveness at the Harvard Business School. He has worked for the World Bank as a consultant in the areas of R&D

for innovation, macroeconomic policy, and fiscal and governance reform, and as a USAID consultant on the issues of budget and fiscal reform. He is research fellow at CASE Institute, Warsaw. Vujović authored and co-authored a number of publications on macroeconomic policy, development, and institutional reform and transition issues.

During his visit to Michigan State University, Vujović was a guest lecturer at James Madison College of Public Affairs in International Relations: the politics of international economic relations of organized by Norman Graham. He also met with Steven Hanson, dean of the International Studies and Programs, and Rachel Croson, dean of the College of Social Sciences. This visit was a fellow-led initiative organized jointly by the Center for Advanced Study of International Development, the Center for European, Russian, and Eurasian Studies and initiated by Humphrey Fellow, Marija Polak.



U.S. DEPARTMENT OF STATE
FUNDING CONTINUED FOR
HUBERT H. HUMPHREY FELLOWSHIP

Michigan State University has been selected by the U.S. Department of State to continue as a host institution for the Hubert H. Humphrey Fellowship Program through the 2021 academic year. The Humphrey Fellowship is a visiting scholars program designed for mid-career professionals to network and study in the field of economic development and human resource management. Fellows are selected from designated countries to study at Michigan for one year followed by a professional affiliation with American counterparts for several weeks. The Fellowship year also provides fellows with opportunities to interact with leaders from U.S. government, civil society and the private sector. The Humphrey Fellowship Program grant is being administered by CASID. Program activities are being led by Ashley Green and managed by CASID staff members Beth Mugavero , Andrea Allen and Barbra Cernadas Doty.

MSU received approximately \$1,000,000 in funding from the U.S. State Department, Institute of International Education, to support the administration of the Humphrey Fellowship Program for the academic years of 2017-18 to 2021-22. Funds will support five new cohorts of Program Fellows to study at MSU. Of the 13 universities chosen to host the Humphrey Fellowship Program, MSU is one of only two schools that focus on economic development/finance and banking.

Humphrey Fellow
Zaw Niang Returns
to MSU

Nine years later, Zaw Niang
collaborates with faculty, presents to
students, and engages with fellows

On April 25, 2017, Michigan State University welcomed returning Humphrey Fellow, Zaw Naing, to the University.

During his 2008-9 fellowship year, Zaw Niang worked with Qi Jiaguo in the Department of Geography as a faculty mentor. Jiaguo advised and collaborated with Zaw Naing throughout the year, and upon his return to Myanmar at the conclusion of his Humphrey year, they continued to work together on select projects and initiatives of mutual interest. Among those is the Asia Hub Initiative with the Center for Global Change and Earth Observations. As the founder and managing director of Mandalay Technology, a company specializing in Geospatial Information Systems (GIS) and technological services, he develops GIS systems and laboratories and works at the confluence of information technology, business, and engineering. He is committed to applying technology as a tool for economic development, infrastructure development, international trade and promotion of foreign investment in transition economies. Previously, Mr. Naing was professionally affiliated with the World Bank and served as country manager for Myanmar Credent Technology.

In order to share his research highlights, Zaw Naing presented on his work at the Center for Global Change & Earth Observations to a group of students, fellows and faculty. Furthermore, he engaged in several Humphrey Fellowship Program events and activities. After participating in year-end retreat activities and sharing his experience with the graduating class of Humphrey Fellows, Zaw Niang presented at the 15-Year Humphrey



Photo: Zaw Naing presenting at the 15-Year Humphrey Fellowship Anniversary Commemoration and Year-End Celebration to fellows, faculty mentors, community members and MSU leadership

Fellowship Anniversary Commemoration on the impact of his fellowship year on his career and research along with Provost June Youatt, College of Social Science Dean Rachel Croson, and International Studies and Programs Dean Steven Hanson.



Ashley Green Named New
Coordinator of the Hubert H.
Humphrey Fellowship Program

In July 2018, Dr. Ashley Green began leading the Humphrey Fellowship Program. She is the assistant dean of administration at MSU’s International Studies and Programs where she provides leadership in the implementation and administration of international programs and global initiatives advancing and strengthening

university wide missions related to research, instructional, outreach and engagement activities. Before coming to ISP, she was the director of scholarships for the National and International Fellowships and Scholarships Office within MSU’s Honors College, where she led the daily operations of the office and assisted students in pursuing national and international funding awards. Before joining NIFS, she was the program manager for the Hubert H. Humphrey Fellowship program in the Center for Advanced Study of International Development within ISP. Her higher education administration experience also includes roles in Admissions, Career Services, and various multicultural programs at Grand Valley State University, the University of Toledo and the University of California, Berkeley. She earned a bachelor’s degree in psychology from MSU; a master’s degree in higher education student affairs from the University of Toledo; and a doctorate in educational leadership and administration from Western Michigan University. Her doctoral research and dissertation focused on the experiences and motivation of successful African American first generation college students.

Leaders for a Global Society

2017-18 MSU Humphrey Fellows



**Aleem Siddiqui Matabalao
Guiapal, Philippines**

Aleem Siddiqui Matabalao Guiapal is the executive director of the Regional Economic Zone Authority where he is in charge of the policies, plans, and programs of the economic zones in Muslim Mindanao. His major area of interest is in the development of the agricultural industry, tourism, investment, finance and comprehensive sustainable development. His ultimate goal is to develop and implement a six-year plan based on the US model of solutions-based economic development.



K. Ashna Mahepal, Suriname

Kajal Mahepal is a senior sector coordinator for the Government of Suriname where she manages development projects and administers various types of contracts. Currently, she is working on establishing utilization of

new bilateral investment opportunities to support GDP growth, economic diversification, job creation, and industry development aimed at contributing to the stabilization and rehabilitation of Suriname's economy through effective government interventions. In addition to this, she is a social entrepreneur stimulating young entrepreneurship, empowering youth and supporting the SDG's.



Asmaa Fizazi, Algeria

Asmaa Fizazi is a deputy director of personnel and training at Tahri Mohamed University where she manages career paths and training, counseling, and management of personnel records. During her Humphrey year, her research focus will be human resource management and ethical governance. More broadly, her goal is to help develop human resource practices in her university and the road freight transportation company she is developing. She would like to contribute to the creation of a strong educational institution, which in turn will be better equipped to produce research, technological and social innovations. She would also like to increase her knowledge about the evolution of transportation culture, the organization of trade, and forecasts of road transport trades.



Asrar Jaber, Gaza

Asrar Jaber is a center coordinator at the Life and Hope Association. Her responsibilities include working with a youth initiative that enhances the role of youth in decision-making positions, especially in municipalities. Her primary area of focus during her Humphrey year will be human resource management including needs analysis, work-life balance, evaluation and compensation. She intends to share these skills within her own organization as well as to others in her country to address stunted progress in underemployment, communication, compensation, and organizational capacity in all sectors.



Carla Lima Aranzaes, Bolivia

Carla Cecilia Lima Aranzaes is head of talent management for Monopol Ltda where she oversees the candidate recruitment and selection, organizational climate improvement, and workforce development, and evaluation. Her goal is to be an agent of change by building a training program in conjunction with the human resources team. While at Michigan State University, she would like to study human resources and the integration thereof with talent management, workforce planning, employee relations and organizational climate. Her overarching objective is the fortification of human resource management and implementation of process improvements within both her organization and her country.



Maha Abu-Rumman, Jordan

Maha Abu-Rumman is a senior analyst for the Royal Hashemite Court – Office of His Majesty King Abdullah II. In this role, she conducts macro analysis of the Jordanian economy and fiscal and monetary policies, and evaluates the feasibility of development projects. Her research focus is decentralized economic development, and she intends to develop a new holistic model for attracting investment, supporting entrepreneurship and SME creation to relieve pressure on the economy due to regional conflict and a resulting changing demographic.



Reem Fouad Mikhail, Egypt

Reem Fouad Mikhail is an international development consultant at Lattanzio SpA where she provides technical support to development projects in areas related to labor market and economic development. She is a former labor marker advisor and gender focal point for Deutsche Gesellschaft Fur Internationale Zusammenarbeit (GIZ). Her major area of interest is economic development broadly, corporate social responsibility and policy interventions related to workforce development. Her ultimate goal is to initiate a CSR project to develop the economy and workforce stabilizing the country politically.



**Sahr Joseph Kaifineh,
Sierra Leone**

Sahr Joseph Kaifineh is the assistant registrar for the Murialdo Institute of Management, Entrepreneurship and Technology. Mr. Kaifineh's major area of focus during his Humphrey year is policy development, the economics of poverty alleviation and natural resource management, and financial instruments of economic development. Upon his return to Sierra Leone, he intends to share his experience and ensure colleagues are development-oriented, as well as to provide support and guidance to the sustainable development goals of his country through his position.



**Santiago Laserna Fernandez,
Bolivia**

Santiago Laserna Fernandez is the head of planning at CIDRE IFD. In this position, he coordinates the implementation of the social responsibility-focused mission and vision of the institution and the integration of these goals within the financial goals. Mr. Laserna Fernandez's main areas of interest during his Humphrey year are food security, climate change, poverty reduction through economic development, and small and medium enterprise finance. His ultimate goal is to create innovative tools and products to augment the social investment framework.



Sonia Joao Buvana, Mozambique

Sónia Joao Buvana is the head of human resources at Letshego Financial Services Mozambique, a commercial bank with strategic intent of becoming the leading inclusive finance bank in Mozambique. Throughout her time with the Humphrey program, Ms. Joao Buvana intends to focus on social entrepreneurship, organizational design and training. Her ultimate goal is pass these lessons along to girls aged 12-18, positively impacting social justice and leadership while at the same time contributing to poverty reduction, gender equity, and a reduction in social delinquency, and unemployment.



**Sophia-Joy Soli,
Papua New Guinea**

Sophia-Joy Soli has spent her career in the Papua New Guinea transport industry after receiving her business computing degree. She held management roles in occupational health and safety, human resources, and customer service. Paramount in her career is the safety and welfare of business operations to provide services to local and international customers. Ms. Soli's academic interest is international trade and supply chain management, policy, and regulatory frameworks within the economic corridor development model. During her fellowship, Ms. Soli hopes to explore unmanned aerial systems and their applications to asset monitoring, maintenance, and cold chain in addressing geographical and infrastructural barriers.



MSU hosts East African fellows: Ongoing exchange program advances young women in agribusiness

As a project accountant at Numa Feeds, Ltd., Eudine Awuzu Asara conducts financial reporting for the Ugandan grains producer and distributor, and works closely with farmers teaching them recordkeeping skills.

“When I was young and growing up, I looked at farming as a thing for people who have not gone to school. But as a CPA (certified public accountant), my perception has changed. I know it can be done by any person, in any profession,” said Asara, who plans to work with Numa Feeds to develop a nutrient-rich product made from locally available ingredients. “I would like to change other people’s mindsets, especially young people, because I think that’s how I’ve been empowered, and I’d like to pass it on.”

Asara is one of 11 East African agribusiness professionals participating in the first cohort of the Professional Fellows Program: Advancing Young Women Agribusiness Entrepreneurs and Innovators, which brought together individuals from Tanzania, Kenya, and Uganda. Hosted at Michigan State University, the program is implemented in partnership with Sokoine University of Agriculture (Tanzania), University of Nairobi (Kenya), and Kyambogo University (Uganda) and is sponsored by the U.S. State Department, Bureau of Educational and Cultural Affairs. Focused on women’s economic empowerment, leadership skills, and business development, the program builds capacity and facilitates connections.

While in Michigan this May, fellows participated in four weeks of internships, seminars, site visits and project development. Fellows then spent one week in Washington, D.C. for the Professional Fellows Congress, where they met fellows from 14 other host institutions. Over the next year, the fellows will continue their careers in agribusiness while implementing individual projects that build on what they’ve learned. This fall and winter, MSU faculty and staff, as well as representatives from internship sites, will travel to East Africa to visit the fellows and continue the exchange of knowledge, ideas and skills.

“This is an example of how Michigan State University can draw across the varied expertise on campus and bring seemingly different disciplines together,” said Amy Jamison, associate director for the Center for Gender in a Global Context and the Alliance for African Partnership. “The Professional Fellows Program connects MSU’s extensive work in agriculture, women’s empowerment, and capacity building, while building deeper connections with our partners in Africa.”

Engaging locally

Based on the interests of the fellows, MSU selected eight local organizations to host internships for a fellow or two. Sites included the Michigan Biotechnology Institute, Michigan Department of Agriculture and Rural Development, GreenStone Farm Credit Services, Swallowtail Farm, Bee Wise Farms, Michigan Farmers Market Association, Allen Neighborhood Center, and the

MSU Product Center. This hands-on opportunity to connect on a shared goal benefitted both the fellows and the hosts.

“When we got this opportunity to work with MSU on this fellowship program, we thought this is such a good opportunity to not only educate our employees locally, but to educate internationally,” said Elana Fata, legal operations specialist at GreenStone Farm Credit Services where Asara interned. “Eudine spent a lot of time with all the departments in our corporate office. She spent time with our CEO learning about GreenStone and asking about our challenges, and asking him advice about her challenges at Numa Feeds in Uganda. This hasn’t just been education for Eudine—we have learned so much from her and it has been an invaluable experience.”

As much as it’s been an idea-generating experience for many of the fellows, the local hosts have had their views of agribusiness widened, as well.

“I’ve never run into a beekeeper here that literally makes everything that they do!” said Lacey Ingrao, co-owner of Bee Wise Farms on Lansing’s Eastside, where Kenyan Joan Watheri Kinyanju interned. “Joan’s resourcefulness has been a gigantic eye opener for me. If someone asked me to find a place to build a bee smoker, I’d be like ‘I don’t know who to go to!’ Her ability to see a product and decide to make that—she’s been taking pictures and measurements—it’s just been really huge for me.”

Founder of Yatta Beekeepers, Kinyaju has been selling honey products and wax plus equipment like centrifuges, smokers, wooden hives, and cloth beekeeping suits. The business is run by Kinyanju and her husband, and she contracts with people to help build the equipment.

“I have people who help me make the beehives, the smokers, the bee suits, and I have people who help me harvest when I need to, and I have people who help me package,” said Kinyanju. “[Lacey and Adam Ingrao] taught me about variety honey, I don’t have to grow the plants that bring the variety honey, but I can partner with the people who grow the plants and I can take the hives to their farm. Then I can have sunflower honey or mango tree honey or watermelon honey in that specific season. I can label my honey with the different varieties, which would make it fetch a higher price.”

Expanding expertise

In the afternoons, seminars and workshops were held by MSU faculty and staff as well as external partners, including Tom Emigh, Acorn Leadership Consulting; Peter Lemmer, CEO of GreenStone Farm Credit Service; Gretchen Neisler, director of MSU’s Center for Global Connections in Food, Agriculture, and Natural Resources, and many others. Topics included innovation and entrepreneurship, gender in agri-food systems, personal development and success, and finance, marketing and governance in agribusiness industries.

To experience what Michigan organizations bring to the world of agribusiness, fellows visited various parts of the state. Site visits included the Women in Agriculture Development Center in Flint, the Hantz Farms in Detroit, the Kalamazoo Community College Food Hub in Kalamazoo, and more.



Fellows visiting Swallowtail Farm with Amy Jameson



Kalamazoo Valley FoodHub



Fellow Joan Watheri and host Lacey Ingrao at BeeWise Farm

Fellows were also able to catch spotlight events, such as the discussion led by Akinwumi Adesina, president of the African Development Bank, a performance of the Dance Theatre of Harlem at MSU's Wharton Center for the Performing Arts, and a visit to the Charles H. Wright Museum of African American History.

"The African fellows received both theoretical and practical training, in some cases directly related to their businesses. They also got to better appreciate the value of concepts such as networks, negotiation and resilience—key when setting up a new business," said Jose Jackson-Malete, associate director for operations and research management at the Alliance for African Partnership. "The group left MSU energized, with a new determination to implement much of what they learnt and with a new network of friends and support system for when they get back home."

Ambassadors of change

Fellows' stay in the U.S. wrapped up with the Professional Fellows Congress in Washington, D.C., which brought together a total of 285 fellows from over 50 countries. They shared their experiences with the exchange program, and discussed the best ways to implement the lessons learned in their home country context.

"Congress week was great as I got to meet many fellows," said Nabiryo, of Uganda. "We got to share our passions, experiences and issues pertinent to our work and how we can identify solutions to the problems we have back home, especially problems that young people face in all sectors."

While the fellows returned home, the exchange continues. The first group of representatives from internship host organizations will travel to Tanzania, Uganda and Kenya in August 2018, with the

second group slated to travel to Africa in January 2019. Then, a second group of fellows will arrive at MSU in October of 2018 to begin the program anew.

"The most valuable asset is the exchange of cultures and worldviews, learning from each other as colleagues and newfound friends," said Wynne Wright, assistant professor in the departments of Community Sustainability and Sociology and one of the coordinators for the exchange program. "This program is transformative for both our visitors and our Michigan-based hosts."

The Advancing Young Women Professional Fellows Program is sponsored by the U.S. Department of State's Bureau of Educational and Cultural Affairs Professional Fellows Division and administered by MSU (U.S.), Sokoine University of Agriculture (Tanzania), University of Nairobi (Kenya), and Kyambogo University (Uganda).

Supporting units and centers within MSU include the Alliance for African Partnership, Center for Gender in a Global Context, Center for Advanced Study of International Development, and the Center for Global Connections in Food, Agriculture, and Natural Resources.

In addition to the internship hosts and additional MSU units, the program's external partners include Kalamazoo Community College Food Hub, TuBer Marketing LLC, Acorn Leadership Consulting, Michigan Food and Farming Systems and its' project, WIA Farm Development Center



Professional Fellows Program Advancing Young Women Agribusiness Entrepreneurs and Innovators Group with MSU faculty

Meet the CASID Advisory Committee

Lisa D. Cook

Lisa D. Cook is an associate professor of economics and international relations at Michigan State University. She was the first Marshall Scholar from Spelman College and received a second bachelor of arts in philosophy, politics, and economics from Oxford University. She earned a doctorate in economics from the University of California, Berkeley, with fields in macroeconomics and international economics. She is currently co-director of the American Economic Association Summer Program and was president of the National Economic Association from 2015–2016. She serves on the Advisory Board of the Lemelson Center for the Study of Invention and Innovation of the Smithsonian Institution and is a member of the Council on Foreign Relations. From 2017–2019, she will be a Sigma Xi (Scientific Research Society) distinguished lecturer.



Andrea Louie

Andrea Louie, an associate professor of anthropology, has conducted research exploring how ideas constructed around "Chineseness," as a racial and cultural identity, have been reworked as transnational processes that bring Chinese from different parts of the world in contact with one another. Her book, *Chineseness Across Borders: Re-negotiating Chinese Identities in China and the U.S.* (Duke University Press, 2004), won the Association for Asian American Studies Social Sciences' book award (March 2006). Her new book, *How Chinese Are You? Adopted Chinese Youth and their Families Negotiate Identity and Culture*, was released in August of 2015. This ethnographic study analyzes how both white and Asian American adoptive parents engage in changing understandings of and relationships with "Chineseness" as a form of ethnic identity, racial identity, or cultural capital over the life course.



Stephen P. Gasteyer

Stephen P. Gasteyer is an assistant professor of sociology at Michigan State University. His research focuses on the nexus between water, land, and community development. Before coming to Michigan State University, he was faculty in the Department of Human and Community Development at the University of Illinois. Prior to that, he was the research and policy director at the Rural Community Assistance Partnership in Washington, D.C., and a research consultant on issues of global water governance. He was a Peace Corps volunteer in Mali from 1987–1990 and worked with environmental nongovernmental organizations from 1993–1998 in the Palestinian Territories.



Maria Claudia Lopez

Maria Claudia Lopez is an assistant professor in the Department of Community Sustainability. She is an economist specializing in natural resources management, environmental economics, experimental economics and collective action. She completed a two-year postdoctoral fellowship at Indiana University with the Vincent and Elinor Ostrom Workshop in Political Theory and Policy Analysis. Before coming to MSU, she was a research associate in the Institute of Behavioral Science at the University of Colorado, Boulder. Recently, she has been working with a multidisciplinary group of colleagues in a National Science Foundation-funded grant aiming to study how economic incentives—in this particular case a payment for environmental services—may change users' behavior once the payment is in place and what happens when it is removed. The research focuses on forest users of Uganda, Bolivia, Peru, Tanzania, and Indonesia, with collaborators in each one of these countries.



Tomas Hult

Tomas Hult is the Byington Endowed Chair and the director of the International Business Center (IBC) in MSU's Eli Broad College of Business. IBC, one of 17 national centers funded by the U.S. Department of Education, serves Michigan as a 24-county Regional Export Network and as an affiliate of the U.S. Department of Commerce. He has been at MSU since 2001 and teaches for three departments (Marketing, Management, and Supply Chain Management). He is also executive director of the Academy of International Business, the president of the Sheth Foundation, a radio host of globalEDGE Business Beat on the Michigan Business Network, and serves on the Lansing Regional Sister Cities Commission and the U.S. District Export Council. He is an elected Fellow of the Academy of International Business. He has published several books, including the #1 market-share leading international business textbooks, *Global Business Today 10e* (2018) and *International Business 11e* (2017) with Charles Hill.



Deogratias Ngonyani

Deogratias Ngonyani is an associate professor in the Department of Linguistics and Germanic, Slavic, Asian and African Languages. His primary research and teaching interests are in language description, the morphosyntax of Bantu languages and comparative-historical studies of southern Tanzanian languages. He has published on various aspects morphosyntax in *Studies in African Linguistics*, *Lingua*, and *The Linguistic Review*. Currently, he is working on aspects of Swahili verbal derivations, as well as on the metaphors and rhetorical devices in the speeches and writings of the first president of Tanzania, Julius Nyerere. He is studying the symbolism that President Nyerere used on such issues as immigration, socialism, segregation, and ethnicity. For seven years, he directed the U.S. Department of Education Fulbright-Hays Group Projects Abroad Program for intensive advanced Swahili summer study in Tanzania.



The Tanzania Partnership Program: Supporting Education and Maternal, Infant, and Reproductive Health in Tanzania

MSU's Tanzania Partnership Program

Since 2009 Michigan State University, the Institute of Resource Assessment at University of Dar es Salaam, the Dar es Salaam University College of Education, Sokoine University of Agriculture, and the Aga Khan Foundation have partnered together to develop the Tanzanian Partnership Program (TPP). The TPP is a long-term collaborative alliance of local and international organizations dedicated to improving local livelihoods and promoting community resiliency in Tanzania. TPP addresses community-identified needs through a participatory and integrated approach that draws on local and international expertise. This approach provides fertile ground for development-related research, forms the foundation for development activities, and opens a space for a community engagement-focused study abroad program. TPP began its work in two pilot villages, Milola, the southern region of Lindi, and Naitolia, in the northern region of Arusha. In 2015, TPP began to expand its efforts to adjacent villages. With university and donor support and international partners, TPP is making difference in and with these communities by promoting increased access to quality of education; improving health, sanitation and hygiene; supporting greater access to and better quality of water; increasing agricultural production and food security; and improving animal health and productivity.

Education

TPP projects focus on the areas of infrastructure, teacher professional development, and improving learning environments. These projects work to make strides to overcome educational barriers by reducing student hunger, providing text books and learning materials, girls' education, and connecting the national curriculum to experimental learning.

Human Health

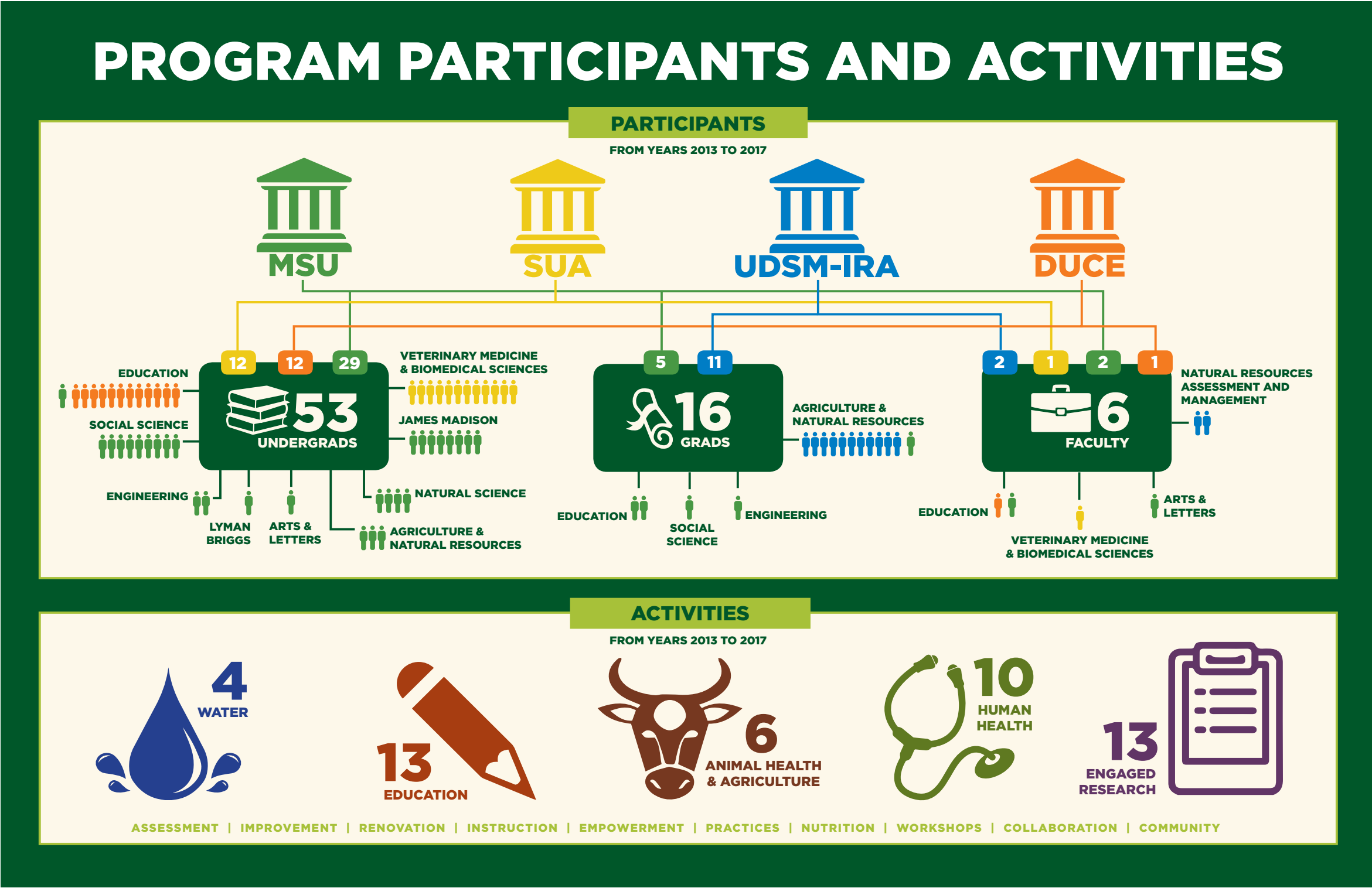
A key area of focus in human health is the reduction of maternal and infant mortality during home births. With half of all births in Tanzania occurring in the home, TPP is working with women, clinicians, and traditional birth attendants to improve safety during pregnancy and delivery. Health programs include: Maternal, Infant and Reproductive Health Delivery Kit Program; Tea with a Midwife family planning program; Health Dispensary Professional Training.

Water Access

Insufficient, unpredictable, and contaminated water is among the most serious problems in Eastern Africa. In rural Tanzania more than 44 percent of people do not have access to safe water. During FY17, TPP worked to improve water access and quality in the northern site with a focus on repairing and updating the community's water system after an unseasonably heavy, 100-year flood. TPP also worked with committee members to develop a water management system with each community.

Animal Health

Sustainable livestock management is focused with the use of Community Animal Health workers. With provided training, members of the Village Water Committee were taught to sustainably manage cattle dip systems for the community. In August, the Uhuru ('Freedom') Torch, one of the national symbols of Tanzania, visited the Naitolia cattle dip. For 55 years, the Uhuru Torch has travelled around Tanzania and stopped to honor sites that symbolize significant development achievements in local communities. The torch stopped at the Naitolia cattle dip, which was constructed in 2014, to honor this development effort and officially open the dip.



Tanzania Partnership Program's 2017 Research Awards

A One-Health Approach for Studying Zoonotic Diseases and Women's Health in Selected Districts of Tanzania.

John B. Kaneene, Barbara Smith, Patricia Peek, S. I. Kimera, E. K. Batamuzi, Ester Ngadaya, Elia Mmbaga, Jonathan Yusto, and Joyce Shangali.

This baseline study collected preliminary data on the prevalence of brucellosis in livestock and the associations between brucellosis status and the health of women of childbearing age. The findings will be used to design prevention and control programs for brucellosis and for maternal health. It will also provide a study population and baseline data for a longitudinal study to monitor infection dynamics within herds and households.

Girls' Mentoring Clubs in Milola. Bethany Wilinski and Emiliana Mwita.

This study focused on understanding how mentoring clubs in Milola affect girls' educational experiences. In addition, the study provided feedback to tailor mentoring club models to scale the program up in future years. The three-phase study focused on: 1) baseline data about community stakeholders' perspectives on girls' education and the role of girls' mentoring clubs, 2) perceptions of mentor teachers and girls who are participating in the mentoring clubs, and 3) community members' perceptions of mentoring clubs and club participants' experiences.

Playing to Learn: Teachers Use of Playgrounds and Sports to Support Learning. Bethany Wilinski, Maregesi Machumu, and Karl Erickson.

The aim of the study is to understand how teachers make sense of playground curriculum modules and professional development, whether and how teachers use the modules in their teaching practice, and what additional supports would be needed for teachers to incorporate principles of learner-centered pedagogy into their daily teaching practice. This study will enable researchers to understand the impact of TPP playgrounds curriculum and accompanying professional development on primary teachers' attitudes and practices. The results will inform TPP's future work in the areas of curriculum development and teacher professional development.

Developing Sustainable Solutions for Human-Wildlife Conflict in Naitolia and the Maasai Steppe, Tanzania.

Robert Montgomery, Bernard Kissui, John Kaneene, Daniel Kramer, Justin Booth, Steve Anderson, Susanna Njambi Maingi, Jacalyn Beck, and Roselyn Kaihula.

This study will deepen understanding of the interdisciplinary factors associated with human-carnivore conflict in Naitolia and the other villages along the Maasai Steppe, so as to provide guidance and support to community members about the techniques and best practices that can decrease the risk of livestock depredation from carnivores. Outcomes of this project will empower landowners to take

specific action (e.g. fortified bomas, improved husbandry practices, and maintenance of vegetation structures on their property) to reduce the risk of carnivore depredation on their property and support the conservation of carnivore populations with which they share these landscapes.

Reports and Publications

"Challenging Hidden Hegemonies: Exploring the Links Between Education, Gender Justice, and Sustainable Development Practice." *Ethics and Social Welfare*. 11(2): 149-162 (March 2017). Emiliana J. Mwita and Susan P. Murphy.

"Global Vision, Local Reality: Transforming Pre-Primary Teacher Training in Tanzania." *Current Issues in Comparative Education*. 19(1): 6-25 (Fall 2016).

"Analysis of Water Security and Source Preferences in Rural Tanzania." *Journal of Water, Sanitation and Hygiene for Development*. (April 2018). Tula Mhamilawa Ngasala, Susan Matsen, Mantha S. Phanikumar and Emiliana J. Mwita.

Water Quality Study: Rainy Season (2017). Unpublished TPP report.

Curriculum Modules for use on Educational Playgrounds and Sports Fields (August 2016). Unpublished Teacher Professional Development materials developed by the TPP Education Team and MSU College of Education graduate students.

MSU Tanzania Partnership Program Supports Education Abroad in Tanzania



The 2017 MSU Kolschowsky Scholars with Jonathan Choti.

The Michigan State University-Tanzania Partnership Program (TPP) supports a successful education abroad program in Tanzania. The program, Sustainable Community Development in Tanzania (SCDT), gives students the opportunity to learn a hands-on community engagement approach to development in a Tanzanian context. SCDT offers students two interrelated opportunities: 1) Undergraduate student scholars work with faculty and graduate student leaders in community development and collaborative research projects using a community engagement approach; and 2) graduate student leaders receive support for programs in areas related to the sustainable community development initiatives of TPP. In 2017, sixteen undergraduate students received Kolschowsky Scholarships to participate in the SCDT education abroad program.

SCDT is at the forefront of MSU's and TPP's efforts to

embed community engagement principles into the university's study abroad experience. The program is designed to increase community capacity and improve community well-being, while providing a transformational experience for MSU and Tanzanian students. SCDT is run in partnership with members of the northern village of Naitolia, the University of Dar es Salaam (UDSM), and Sokoine University of Agriculture (SUA).

Students and faculty from MSU, UDSM, and SUA work together with the community to organize, manage, and complete development and research projects. During the program, students learn about the socioeconomic organization and customs of the Maasai, the history of development in Tanzania, different approaches to development, and receive linguistic training in Kiswahili. To culturally orient and deepen students' connection to the community, the SCDT program includes a homestay with local families. The students gain friendships and form academic partnerships that are likely to continue long after the program has ended.

Tula Ngasala, a doctoral student in the MSU Department of Civil and Environmental Engineering, served as the faculty lead in 2017. University of Dar es Salaam faculty leads were Emily Mwita from the UDSM College of Education (DUCE), Faustin Maganga from the Institute of Resources Assessment of UDSM (IRA), and Sharadhuli Idd Kimera from SUA. Linda Munisi, a graduate student studying natural resource assessment at IRA, rejoined the program as assistant leader for a second year. For more information on the education abroad program or how to become a Kolschowsky Scholar, contact Tula Ngasala at: ngasalat@egr.msu.edu.



MSU students helping with EMIMA Camp.

2017 MICHIGAN STATE UNIVERSITY KOLSCHOWSKY SCHOLARS

Mia Bosankic
Environmental Studies & Sustainability

Veronica Buschhaus
World Politics

Samuel Cayen
International Relations

Oacia Fair
Environmental Studies & Sustainability

Ashley Greenleaf
Lyman Briggs

Ashley Nance-Panek
Human Biology

Aimee Montambeau
Human Biology

Mycala Smith
Zoology

2017 UNIVERSITY OF DAR ES SALAAM COLLEGE OF EDUCATION SCHOLARS

Efratha Kristos
Onesmo Madaraka
Elizabeth Shirima

2017 SOKOINE UNIVERSITY OF AGRICULTURE SCHOLARS

Emmanuel Kaijage
Joyce Mganga
Ezekiel Sigala



2017 Peace Corps Recruits with Chad Papa, CASID Director Rob Glew, Peace Corps Recruiter Michael Gall and Kelsey McClure

MSU Celebrates Students Selected for Peace Corps Service

During the 2017-2018 academic year, a new group of Michigan State University Alumni began their service as Peace Corps Volunteers. These new Volunteers will join many other alumni in making MSU a top producer of Peace Corps Volunteers. In 2018, MSU ranked 17th among large universities and colleges for the number of graduates joining the organization, with a total of 47 currently serving volunteers. Since the beginning of Peace Corps in 1961, 2,407 MSU alumni have served around the globe. In 2017, the state of Michigan ranked No. 9 among states with the highest number of volunteers.

In April 2018, newly selected students from Michigan State and other colleges and universities around Michigan were joined by their friends and families to celebrate at MSU's Cowles House. The reception gave newly invited Volunteers the chance to meet each other and Returned Peace Corps Volunteers to learn about their services.

The MSU Peace Corps Office is administered by the Center for Advanced Study of International Development and located in Room 202 of the International Center. To learn more about Peace Corps, contact a campus recruiter by calling 517-432-7474 or sending an e-mail to msupeace@msu.edu.



MSU Study Abroad Student Teaching class of Tanzanian Youth

PEACE CORPS RECRUITER Spotlights

Chad Papa

Chad Papa joined the MSU Peace Corps Office in the fall of 2017. After graduating from the University of Florida with bachelor's degree in science in environmental science, Chad served in the Peace Corps in Senegal as an agroforestry extension agent. In Senegal, Chad collaborated with community partners, government extension agents, and non-governmental organizations (NGOs) to increase food security of local communities as well as helping farmers increase soil fertility through the implementation of agroforestry practices. Chad also served as the Kedougou Youth Leadership Camp monitoring and evaluation coordinator in 2014 increasing youth development. During the rainy seasons, he served as a monitor for the PECADOM+ malaria program. Additionally, he managed the international NGO, Trees for the Future's, regional office in Kedougou, conducting budgeting, reporting, and programing duties along with local staff. After his service, Chad worked as a horticulturist at Marie Selby Botanical Gardens for a year, and then he came to MSU, where he obtained his master's degree in forestry in 2017. He is currently working towards his doctorate in forestry at MSU focusing on agroecological systems in the Fouta Djallon region of West Africa. To speak with Chad about opportunities with the Peace Corps, contact him at msupeace@msu.edu.

Kelsey McClure

Kelsey McClure joined the Michigan State University Peace Corps Office in September of 2017, shortly after completing her Peace Corps service in Cambodia. From 2015 – 2017, Kelsey worked as an English Teacher and Teacher Trainer at a local secondary school in Cambodia. Along with her daily tasks of teaching English with Cambodian counterparts, Kelsey also conducted after school English classes to help students further their English learning. Kelsey also organized summer English classes and participated in the planning and implementation of Camp STAR (Students

Taking an Active Role) with other volunteers in her province of Kampong Cham. Kelsey grew up in Holt, MI, but moved to Western Michigan University for her undergraduate studies where she earned her bachelor's degree in Secondary Education. After her service, Kelsey decided to come back to the Lansing area to work in the Peace Corps Office and in the Center for Advanced Studies in International Development (CASID) at MSU. In the future, Kelsey hopes to continue her work in education by pursuing a graduate degree in International Education.



CASID Supports International Programming at Community Colleges

The Midwest Institute for International/Intercultural Education (MIIE) is a self-funded consortium of two-year colleges based at Kalamazoo Valley Community College. Its primary objective is to support curriculum and professional development for community college faculty. As part of this effort, MIIE offers faculty from post-secondary institutions intensive week-long learning environments to discuss ways to internationalize the curriculum at their home institutions.

In the summer of 2017, the consortium workshop dealt with the topic of "Human Migrations and Global Networks". During the curriculum workshop, faculty participants attended sessions revolving around the different aspects of human migration, including the presentation entitled, "Historical Human Migration in Asia: Cases from India to Indonesia" by Siddharth Chandra. Chandra is Director of Michigan State University's Asian Studies Center.

CASID is proud to co-sponsor the MIIE summer workshops along with the African Studies Center, and the Asian Studies Center.



CASID Strategic Partnerships: Engaging Research Around the World

China

Frederick Leong, Psychology

Shanghai-MSU Research Consortium on Career and Work Psychology

Ghana

Michael Bratton & Jeff Conroy-Krutz, Political Science

Researching 'Partisan Media and the Rise of Political Polarization in Ghana'

India

Sherman Garnett & Linda Racioppi, James Madison College; Seig Snapp & William Baird, College of Agriculture & Natural Resources

Partnership development between Banaras Hindu University – National Intellectual Convention on Resurrection of Agricultural

Education and Research in India

Amita Chudgar, Education

Exploration of establishing relationships and exchange with Dell Foundation and Azim Premji Foundation

Nicaragua

Fredy Rodriguez-Mejia, Anthropology & Jennifer Goett, James Madison College

International strategic partnership proposal between MSU and the Universidad Centroamericana in Managua, Nicaragua Researching 'Partisan Media and the Rise of Political Polarization in Ghana'

Rwanda

Lori Skibbe & Hope Gerde, Human Development & Family Studies; Laura Apol, Education

Partnership between MSU, Teach Rwanda and the University of Rwanda

Tanzania

Stephen Gasteyer, Sociology; Susan Master, Engineering; Folu Ogundimu, Journalism

Assessing water quality and the impact of human Activities on Drinking Water Contamination in Dar es Salaam using an Interdisciplinary Approach

Won Song, Eduardo Nakasone & Clement Kubuga, College of Agriculture & Natural Resources – Food Science and Human Nutrition

Needs assessment to improve maternal & child nutrition through nutrition-sensitive agricultural interventions in Lindi District, Tanzania

CASID Offers Two Undergraduate Minors

The Center for Advanced Study of International Development now offers two undergraduate minor options administered by the College of Social Science. Both are 15 credits and interdisciplinary. Students should meet with advisors in the College of Social Science to decide which courses best align with their interests.

International Development – designed to help students currently working toward their bachelor's degree in the College of Social Science to understand the social context of international development practice. Students will learn how social scientists approach international development and how to integrate the multiple disciplinary methods involved in the field of international development.

Global Studies in Social Science – designed to help students who want to add a global interdisciplinary element to their coursework and learn how global systems and cultures influence international relations and national trends.

Additional information about the minors, including a complete list of course options is available on the CASID website, casid.isp.msu.edu.



Leaders in Global Engagement Visit MSU

During 2017, the Global Engagement Speaker Series brought four speakers to Michigan State University to present on a variety of topics related to human rights and justice. This lecture series brings individuals from across industries with experience in outreach and engagement to speak about their experiences with the MSU community. Speakers will present on the importance of higher education and its role in democracy and human rights.

In the spring semester of 2017, Shawn Wilson, director of research at Gribi College of Indigenous Australian Peoples, Southern Cross University, and Catherine Odora Hoppers, a professor in the Department of Science and Technology, and National Research Foundation South African Research Chair in Development Education at the University of South Africa, were brought to Michigan

State University to speak about their experiences in higher education. Both he and Hoppers spoke on indigenous cultures knowledges and the benefits of integrating those areas into higher education institutions. Wilson spoke of the importance of including traditional knowledge of indigenous peoples in the university setting to create inclusive and caring environments for students while Hoppers spoke of the importance of valuing and including traditional knowledge systems in community outreach and engagement in higher education.



Shawn Wilson addressing students

In the fall of 2017, two more speakers were brought to campus. Maryam Mohiuddin Ahmed, founder and co-director of the Social Innovation Lab, outlined how the Social Innovation Lab in Pakistan helps young entrepreneurs to think about sustainable solutions to what they see happening in the world. Through workshops and learning sessions put on by SIL, the entrepreneurs learn to focus on communities to best serve their needs. In the final presentation of 2017, Thelma Awori spoke of the state of African women in regards to economic empowerment and their role in peace and security. During her presentation, Awori spoke of women involved in economic empowerment through organizations developed to provide women with economic support.



Maryam Mohiuddin Ahmed

While at MSU the speakers were able to meet with a variety of key contacts at MSU and student groups such as graduate students from across the university and undergraduate courses. In addition, both Thelma Awori and Maryam Mohiuddin Ahmed met with members of the Hubert H. Humphrey Fellows Program. GESS presentations are free to the public. Interested individuals are also able to view the Global Engagement Speaker Series online alongside an interview with each speaker. CASID, along with other university units, is proud to support GESS. For more information, please see visit.gess.msu.edu.

Rachel Elbin Joins CASID Team as Research Assistant

Rachel Elbin joined the Center for Advanced Study of International Development in the fall of 2017 as a Research Assistant for the Foreign Language and Area Studies Fellowships (FLAS) program. Rachel is an anthropology PhD student at Michigan State whose dissertation research focuses on development, natural resource extraction, and political morality in Tanzania. At MSU, she has had the opportunity to teach on such topics as gender, race, ethnicity, and nationalism. Last year, Rachel developed and taught the course "US Social Inequalities" for VIPP. Having personally benefited from the Foreign Language and Area Studies (FLAS) Fellowships program throughout her graduate career, Rachel is now happy to assist CASID in applying for FY 2018 FLAS Program funding.



Global Land Programme Selects MSU as North American Nodal Office

In October, the Global Land Programme, an international organization of scientists, practitioners, and policy makers focusing on land system change around the world, selected MSU's Center for Global Change and Earth Observations as their North American nodal office. This achievement brings international recognition to the Center for Global Change and Earth Observations' innovative interdisciplinary work.

John A. Hannah Distinguished Professor Emilio Moran and Professor Jiaquo Qi, both from the Department of Geography, Environment, and Spatial Science, will act as co-directors of the nodal office, with William McConnell, an associate professor at MSU's Center for Global Change and Earth Observations, coordinating the program. Other Global Land Programme nodal offices are located in China, Japan, Taiwan, Germany, Argentina, Ivory Coast, and Cyprus.

Land systems relate to all human use of land, including socioeconomic, technological, organizational, as well the consequences—positive or negative—resulting from human activities. The Global Land Programme supports the interdisciplinary study of land systems and works to understand and design solutions to the problems arising from changes in land systems. Using modelling, monitoring, case study syntheses, and long-term studies, the Global Land Programme focuses on six major themes: urban-rural interactions, telecoupling, land climate interaction, land use and conflict, land governance, tradeoffs on services and biodiversity, and land management systems.

To facilitate collaboration, the Global Land Programme organizes open meetings for researchers around the world studying land systems. In 2017, submissions from the GLP Open-Submission Meeting about land-use

change were collected together for a special issue of the journal *land*. With land-use change being a force in environmental changes occurring around the world, it was an area of focus for the submissions. Biodiversity was another area of interest in the special issue. This special issue had the objective of showing the local and global connections between food systems and land-use and the implications they have on climate, ecosystems and social systems through a global context.

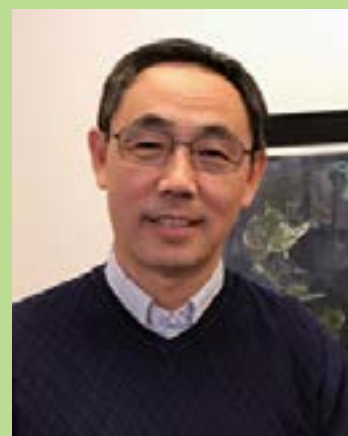
Each nodal office is also responsible for organizing regional events to bring together researchers and policy makers from a common geographic area to discuss their work and connect scientific findings to policy and practice. To this end, the North American nodal office organized a scoping workshop during the 2017 annual meeting of the American Association of Geographers in Boston. The workshop was attended by Land Change scholars to discuss future Working Group proposals.

Through the relationship between the Asia Hub Initiative, MAIRS and GLP-North America Nodal Office, Asia Hub Initiative brought together the Asia WEF Nexus workshop in Thailand. Representatives from Cambodia, China, Japan, Laos, Myanmar, Thailand, and Vietnam participated in the workshop to achieve the objectives of Prelaunch of the Asia Hub Initiative, beginning of MAIR Asia WEF Nexus Working Group, organization and solicitation of special issue papers for the *Journal of Water*, and to present the latest WEF Nexus related to research findings and activities.

CASID, along with other university units, is pleased to help support the administration of the nodal office. For more information on the Global Land Programme and their current projects, please visit glp.earth.



John A. Hannah Distinguished
Professor Emilio Moran



Professor Jiaquo Qi



Associate Professor
William McConnell



Global Business Club of Mid-Michigan Continues to Connect Local Companies to the World

The Global Business Club of Mid-Michigan focuses on global issues of interest to the mid-Michigan business community. Since 1990, the monthly Global Business Club luncheons have provided an opportunity for local academics, public policy makers, and the local business community to network and hear from distinguished speakers about business in a global context. The Center for Advanced Study of International Development—along with Michigan State University's Center for International Business Education and Research, the Greater Lansing Regional Chamber of Commerce, Foster Swift Law Firm, Lansing Community College, Michigan State University College of Law, and the Center for Gender in Global Context—is a proud supporter of this unique outreach organization and its programs.

Participants of the workshops included Humphrey fellows who presented on ideas they were developing for sustainable impact projects in their home countries and networked with local exporters.



Humphrey Fellow Sophia-Joy Soli, US Export Assistance Center Director Kendra Kuo, and the MSU International Business Center international Trade Specialist Jade Sims after the January luncheon on "Resources for the Basics of Exporting".

"I had the opportunity of learning how best I could take advantage of international trade shows, and method of entry to the logistics and legalities of shipping my product overseas and getting paid. I must say that the training exposed me to great deal as someone new to exporting."

-Sahr Joseph Kaifineh, Humphrey Fellow Sierra Leone

Congratulations to MSU's Student Fulbright–Hays Award Recipients

The Fulbright-Hays Doctoral Dissertation Research Abroad Award funds graduate students conducting international research in a less-commonly taught language. The awards provide between six and twelve months of dissertation research support. 2017 awardees include:

Jessica Ott—Anthropology
Country/Region: Tanzania
Research Topic: Women's education in Zanzibar

Jodie Marshall—History
Country/Region: Oman, United Kingdom, and Tanzania
Research Topic: Sultan of Oman's relocation of the capital

Additionally, two other MSU graduate students received funding under the U.S. Student Fulbright Program funded by the U.S. Department of State and the Institute for International Education.

Tara Reyelts—History
Country/Region: Nigeria
Research Topic: Gendering of law and justice in precolonial and colonial Igbo land

Akil Cornelius—History
Country/Region: Venda
Research Topic: Armaments utilized by the Venda people of South Africa in their asymmetrical warfare against European aggressors

Congratulations to the MSU students who received awards. Interested students should contact Roger Bresnahan, the MSU Fulbright advisor, at bresnaha@msu.edu.





LATTICE participants.

LATTICE: Linking All Types of Teachers to International and Cross-Cultural Education

LATTICE (Linking All Types of Teachers to International and Cross-Cultural Education) is an award-winning study group that brings together local K-12 teachers, international graduate students, and MSU faculty and staff to learn about global issues and to bring a global perspective to local primary and secondary classrooms. The goal of LATTICE is to promote global learning by facilitating discussions and presentations on global issues with creative, but practical, connections to K-12 education.

LATTICE works to support detailed, contextual exploration of global issues and current events, linking a wide range of social, cultural, economic and political topics from international perspectives. LATTICE participants meet monthly for an interactive program that focuses on a global topic. Meetings often involve small group discussions, panels, presentations, and personal stories. In 2017, LATTICE participants took part in a wide

variety of presentations, including “Student Voice: Celebration of Diversity”, “Legal Issues Regarding the Travel Ban”, “Happiness, Stress, and the Adolescent: A cross cultural approach”, “Can You be a Global Citizen and a Patriotic Citizen at the Same Time?”, and “Conflict Resolution: School models and global connections”.

LATTICE is supported by the Center for Advanced Study of International Development, the African Studies Center, the Asian Studies Center, the Center for Latin American and Caribbean Studies, the College of Education, the Graduate School, International Studies and Programs, the Center for Gender in Global Context, Ingham County Intermediate School District, and participating school districts. To learn more about LATTICE visit their website at latticeworld.org. If you would like to get involved with LATTICE, contact lattice@msu.edu or look for MSU LATTICE on Facebook.



Students at the 2017 World Language Day on MSU's campus learning about Tanzania.

Foreign Language and Area Studies (FLAS) Fellowship Awardees

Foreign Language and Area Studies (FLAS) Fellowships provide funding from the U.S. Department of Education to undergraduate and graduate students to study languages that will meet the critical need for language specialists in American education, government, and other policy-focused organizations. The Center for Advanced Study of International Development and the Center for Gender in Global Context (GenCen) awarded 21 FLAS Fellowships for the summer of 2017 and the 2017–18 academic year. These fellowships specifically support students who combine advanced study of a foreign language with training in international development studies or in aspects of international development within other fields of study.

2017-18 Graduate Academic Year Fellowship Awards

- **Rebecca Minardi** – Community Sustainability, Portuguese
- **Marcela Omans** – Anthropology, Chinese
- **Chad Papa** – Forestry, Malinke/Mandinka
- **Lyudmila Austin** – History, Russian
- **Suban Cooley** – Rhetoric, Writing, and American Cultures, Swahili

2017-18 Undergraduate Academic Year Fellowship Awards

- **Claudia Allou** – Human Biology and James Madison, French
- **Rachel McIlvaine** – Urban and Regional Planning, Spanish
- **Brenna Brill** – Professional Writing, IsiZulu
- **Alexandra Stano** – James Madison, Romance and Classical Studies, Spanish
- **Elizabeth Selbee** – Comparative Culture & Politics, James Madison, Hindi
- **Natalie Rogers** – James Madison, Swahili
- **Maureen Onchiri** – Psychology, Swahili

2017 Summer Graduate Fellowship Awards

- **Lyudmila Austin** - History, Russian
- **Lucas Caleb** – Political Science, Arabic
- **Suban Cooley** – Rhetoric and Writing, Swahili
- **Eric Kesse** – History, Nzema
- **Rebecca Minardi** – Community Sustainability, Portuguese
- **Marcela Omans** – Anthropology, Chinese
- **Aaron Rozin** – Linguistics and Languages, Russian
- **Darion VanHaren** – Romance and Classical Studies, Arabic

2017 Summer Undergraduate Fellowship Awards

- **Madelyn Averill** - James Madison, Hindi

Michigan High School Students Travel the World in a Day

In March 2017, over 600 Michigan high school and community college students attended Michigan State University's tenth annual World Languages Day to learn about world languages and cultures. The event, which is free for all participants, encourages high school students, as well as their parents and teachers, to explore the global community through a variety of sessions that focus on the language or culture of a country, globalization, the importance of learning foreign languages, and international career paths. Various MSU units, faculty, graduate students, and members of the community led more than 75 sessions and staffed 15 exhibitor information booths. Session topics ranged from the food of Thailand to the dialects of Germany. Sequoia, a student from Detroit, said of the event, “My favorite part was getting to learn more about the cultures I am interested in, and learning more about language as a whole and the importance of being able to speak more than one language.” World Languages Day is organized by the MSU Center for Language Education and Research. The Center for Advanced Study of International Development, along with other MSU units, is pleased to continue its sponsorship of this exciting event.

2017 World Language Day Sessions Included:

- From Arabic to Zulu: Study language at MSU!
- The endangered list: Documenting disappearing languages
- Skål! Learn to celebrate like a true Viking
- La vie d'un lycéen: What's French high school like?
- Get to know the country of hakuna matata!
- Let's play: Korean hacky sack and other traditional games
- West Java: Not on the Starbucks menu
- Bindis and Bollywood
- Israel's multicultural music
- A taste of Thailand: Spices, sayings, and script
- Chinese folk dance: Combining art and life
- Dragons, snakes, and a taste of Vietnamese culture
- Sky boats and fire cars: Stories from a Peace Corps volunteer
- Seven symbols to celebrate the New Year - in March!
- Japanese calligraphy: What are all them squiggly lines?
- Grumbeere und Zicken: Fun with German dialects
- Todo en español! (All in Spanish!)

FACULTY Spotlights



Christian Ahlin
Department of Economics

Christian Ahlin earned his undergraduate degree in math and computer science from Duke University in 1995, and his doctorate in economics from the University of Chicago in 2001. He has been at Michigan State University since 2007, having previously taught at Vanderbilt University. Ahlin's research focuses on economic development, especially financial and political aspects. He has contributed most extensively to understanding the microcredit movement. A key question is how microcredit and related sectors interact with the broader economy. His research has established how much and in what ways microfinance institutions are dependent on macroeconomic conditions. He has also contributed to understanding the conditions under which microcredit may serve as a catalyst for a broader development process, acting as a stepping stone that eventually becomes obsolete. Another focus of his research is to understand what the impediments were to lending to low-wealth households throughout the world, and what lending innovations were and are key to overcoming these obstacles. In several contributions, Ahlin studies group lending and repeated lending as two techniques that can make uncollateralized lending possible, identifying and explaining trends in their use, and providing conditions under which each works best. Ahlin has also contributed to the literature on corruption and economic development, examining effects, causes, and remedies for corruption. A current project provides a new statistical technique for understanding correlates of income inequality, showing how to estimate the Gini coefficient in a regression framework. This technique is applied to Thai data to show that wealth differences play a much smaller role in income inequality among those households connected to the financial sector than among those unconnected.



Jeff Conroy-Krutz
Department of Political Science

In 2017, Norway became the first country to shut down FM radio, completing a transition to digital-only broadcasting. This move furthered the notion that radio was going the way of the telegraph, carrier pigeon, and cassette as an information transmitter. However, in Africa, FM radio remains king. Even as social media there explodes, radio remains the go-to source for news in most African countries. Radio is cheap to access, doesn't require literacy, uses myriad vernaculars, and covers local events most relevant to people's lives. However, while radio informs and provides venues for engagement, it can also spread messages of division and hate.

Jeff Conroy-Krutz, an associate professor who joined the Political Science Department at MSU in 2009, is a core faculty member of the African Studies Center, and has studied FM radio in Africa for over a decade. His doctoral work (Columbia University, 2009) focused on how information access affects ethnic voting in Uganda and Senegal. In 2012, he co-conducted a field experiment in Ghana on the effects of partisan radio on polarization during a presidential campaign, finding that, contrary to conventional wisdom, those exposed to counter-attitudinal broadcasts during their morning commutes had more moderate attitudes, while like-minded and neutral messages had no effect. CASID support, including a Strategic Partnership Grant to study polarization with the Center for Democratic Development in Ghana, has been critical for his research in East and West Africa. Other funding for his work has come from the National Science Foundation, BBC Media Action, US State Department, US Agency for International Development, and the Embassy of the Netherlands. Conroy-Krutz is currently focusing on three projects related to radio in Africa. In 2018 and 2019, he will organize several experiments to study the effects of a radio soap opera designed to reduce inter-group tensions in the cross-border

region of Burundi, DR Congo, and Rwanda. Later this year, he will conduct a field experiment to study the effects of a radio discussion program in Niger. He is currently working on a broader project to measure the effects of both hate speech and "peace programming" in Kenya.



John Kerr
Department of Community Sustainability

John Kerr is professor and associate chair in the Department of Community Sustainability at Michigan State University. He has been at MSU since 1999. Previously he worked at the International Food Policy Research Institute (IFPRI) in Washington, DC, and the International Crops Research Institute for the Semi-Arid Tropics (ICRISAT) in Patancheru, India. He earned his PhD in applied economics in the Food Research Institute at Stanford University.

Kerr's research interests are in international agricultural development and natural resource management. Focal areas of his research have been on adoption of agricultural technology and natural resource conservation practices, collective action and property rights related to natural resource management, and the interaction of these things with rural poverty in developing countries. He has lived in and conducted research in India, Mexico, and Egypt, and conducted short-term research in many other countries as well.

His current research focuses primarily on two main areas: 1) Complexities in how people respond to payment for environmental services (PES) initiatives, focusing on interactions between financial incentives and social norms; and 2) farmers' knowledge and actions regarding soil management in parts of the world where soil degradation is a major constraint to agricultural development, such as in parts of sub-Saharan Africa.



Mahesh Nalla
Department of Criminal Justice

Mahesh Nalla is a professor in the School of Criminal Justice. He teaches courses in criminology, globalization & crime, and security management. His primary research interests are focused in emerging and transitional democracies on two broad areas: Governance, legitimacy, and social regulation (public & private policing); and, gender, victimization, and public health. He is currently engaged in three major projects. The first relates to legitimacy of police and criminal justice organizations in India, Russia, and Hungary. The second project explores issues of migration and xenophobia in Russia and Turkey. The third project relates to gendered spaces and violence, particularly on public transportation, bus stops, and other public spaces in Delhi, India.

Nalla's teaching, research, and outreach goals are centrally tied to and aligned with the core mission and efforts of CASID's foci on international development in areas of environment, health, and justice. His recent volume *Violence Against Women in India* (co-editor, Oxon, UK: Routledge, 2018) and publications on gendered violence (*Sexual Harassment in Public Spaces*, 2016); and, his current projects on fear of the other and xenophobia, and police legitimacy are some of the outcomes that are in tune with CASID's goals.

Nalla's outreach efforts have reached the far corners of the world. In one of his earlier projects, the United Nations (UN) had commissioned him to coordinate and conduct workshops for UN member state from over 200 countries around the world on the issue of "Prevention of Illicit Firearm Violence." His written proceedings from these workshops included best practices for reducing firearm violence through legislative means and police practices formed the cornerstone for the draft International Protocol Against the Illicit Manufacturing of and Trafficking in Firearms, Ammunition and Other Related Materials, as a supplement to the United Nations Convention Against Transnational Organized Crime.

Sarah Murray

Urban and Regional Planning

Sarah Murray graduated from Western Michigan University with Bachelors of Arts degrees in French and Global and International Studies. Throughout her collegiate studies, she studied for varying durations in France, Germany, Greece, and Italy. Upon graduation, Sarah participated in a term of service with LISC AmeriCorps, and then continued to work in community and economic development across Michigan, providing technical expertise to municipalities and securing funding from state and federal agencies for infrastructure and community development initiatives.



In 2013, Sarah began a master's program at Michigan State University (MSU) in Urban and Regional Planning. While at MSU, Sarah engaged in research on land pressures from population mobility and climate change, and their impacts on food systems in developing countries, specifically in East Africa. She was awarded two Foreign Area Language Studies (FLAS) fellowships to study Swahili. The first, through MSU's Center for Advanced Study of International Development, was for the summer of 2014, when Sarah attended Indiana University's Summer Language Workshop. This intensive eight-week program significantly aided her ability to conduct her thesis research in Tanzania immediately following the course. Sarah graduated with the American Institute of Certified Planners Outstanding Planning Student Award. Upon graduating, she taught as a Lecturer at the University of Michigan – Flint, and was a Program Assistant for the Environment Program at the Charles Stewart Mott Foundation, where she worked on grant-making related to international development finance and renewable energy access in Tanzania and Brazil.

In 2017, Sarah joined Indiana University's Office of International Development. As the Associate Director, she facilitates short-term international exchange programs, funded by the U.S. Department of State, focused on leadership development, building networks, and cultural exchange through people-to-people relations. This fall, she will be recognized as a recipient of the 2018 Alumni Achievement Award from Western Michigan University's Department of World Languages and Literatures.

Karl Schneider

International Relations and Economics

Karl Schneider is a Fulbright English teaching assistant at Universidade Estadual Norte do Parana (UENP) in Brazil. He graduated with dual degrees in International Relations and Economics from Michigan State University in 2017. During the 2015-2016 school year, he participated as a FLAS scholar focusing on the study of Portuguese and Brazil, taking coursework in International Development and advanced Portuguese classes.



This experience as a FLAS fellow, previously as a study abroad participant and more broadly with his coursework on Latin America inspired him to apply as a Fulbright ETA in Brazil following graduation. In Brazil, Schneider uses his Portuguese skills and context focused on the economics and politics of the regions that he gained from the university.

During his time at MSU, Karl also worked as a Research Assistant on a National Science Foundation project focusing on bioenergy development in the Amazon and four other American countries. He wrote his thesis focusing on Latin American development banks and the expansion of Southern financial institutions.

His daily responsibilities at UENP include giving cultural lectures on the United States, developing institutional activities with the International Center, working with students on English grammar, speaking, and listening, and designing relevant discussion topics. Additionally, Schneider works on research primarily with Economics Professors at UENP. His research includes projects on the impact of Lavo Jato on the Brazilian stock market, continuing his thesis work, and a comparative analysis of American and Brazil state debt.

Following the conclusion of the Fulbright grant, Karl will return to Washington D.C., where he works as a Research Assistant for the Consumer Financial Protection Bureau. His portfolio there includes issues of small business lending, lending discrimination, and regulatory burden on financial institutions. He hopes to eventually attend graduate school in either political science or criminal justice, focusing on international issues of political economy, emerging markets, and trade.

Lyudmila Austin

History

Lyudmila Austin has received a Foreign Language and Area Studies Fellowship from the Center of Advanced Study for International Development for two summers and for the past academic year (2017-2018). Lyudmila is a third-year PhD student in the Department of History, where she focuses on the history of Modern Russia and the Soviet Union. Through the FLAS Fellowship, Lyudmila was able to take a uniquely designed program, Russian for Heritage Speakers, through the American Councils for International Education in St. Petersburg, Russia. Lyudmila was also able to use her Russian language skills to take Ukrainian for Reading Knowledge, a course that builds on students' command of Slavic languages, at the Harvard Ukrainian Summer Institute. Additionally, a FLAS academic year fellowship allowed Lyudmila to advance her command of Russian language through Russian for Research, a two-semester course taught at the University of Michigan, which Lyudmila took through the Big Ten Alliance Traveling Scholars Program.



Lyudmila studies migration since the late Soviet period, more specifically, the migration to Russia of Russian-speakers who lived outside of their constituent ethnic territories. Lyudmila focuses regionally on migration of Russian-speakers from the Southern tier of the USSR to the Northern Caucasus, a diverse and vibrant border zone in Russia. Lyudmila's dissertation project received the Stephen F. Cohen—Robert C. Tucker Dissertation Research Fellowship from the Association of Slavic, East European and Eurasian Studies. Through the support of this fellowship, she will embark on an academic year of archival research in the fall.

Suban Nur Cooley

Writing, Rhetoric, and American Cultures

Suban Nur Cooley has been a Center for Advanced Study of International Development and Center for Gender in Global Context Foreign Language and Area Studies (FLAS) Fellow recipient for two academic years and spent a summer intensive in Zanzibar, Tanzania. She will be a FLAS Fellow again this coming summer, heading to Arusha, Tanzania – and an academic year recipient again next year. She will be a third-year PhD student in the department of Writing, Rhetoric, and American Cultures.

Through the fellowship, Suban has gained a strong proficiency of Swahili in order to support her research goals of working with women in refugee communities from East Africa – particularly Somalia – where she is from. This language knowledge will allow for her to more deeply connect with all refugee populations who speak Swahili (Sudanese, Eritrean, etc.) in order to support those who have spent ample time in refugee camps as they transition to countries like the United States, where they are seeking asylum.

From an international development and social justice perspective, Suban's research interests are focused on activist collectives, digital technologies, displacement, and breaking the one-sided narrative of the Somali community in the media and beyond. She looks forward to continuing her work supporting displaced East African communities in the future as an educator, or while working within nongovernmental organizations across the globe.





YOUR SUPPORT IS GREATLY APPRECIATED

Gifts to the CASID Endowment support faculty and student research and development.

Gift Information:

I/We wish to make a gift/pledge in the amount of: \$ _____
designated for

**The Center for Advanced Study of
International Development**

My/Our total gift will be paid as indicated:

☐ A check payable to Michigan State University

☐ A pledge of the following duration: _____
(maximum of five years)

Enclosed is my first payment of: \$ _____

Send pledge reminders: (check one)

☐ Annually ☐ Quarterly ☐ Semi-annually

beginning: month _____ year _____

☐ This pledge replaces all other outstanding pledges

☐ This is a joint gift with my spouse

Spouse name: _____

☐ I work for a matching gift company, or ☐ My spouse works for a
matching gift company (check one)

Employer(s): _____

Appeal Code: _____ Staff Resp. _____

Personal Information:

Name: _____

Address: _____

City: _____ State: _____ Zip: _____

Office Telephone: _____

Home Telephone: _____

E-mail: _____

Signature: _____

MSU Faculty/Staff Only (above signature required)

☐ Deduct my pledge in equal monthly installments

☐ 12 months ☐ 24 months ☐ 36 months

☐ Deduct my gift in one lump sum from my paycheck in
the month of: _____

ZPID # (required for payroll deduction): _____

Pay group (check one):

☐ Salary ☐ Labor ☐ Grad ☐ AY Faculty (8 installments)

Make checks payable to "Michigan State University" and return to

CASID

International Center

427 North Shaw, Room 202

East Lansing, MI 48824-1035

Tel: 517.353.5925 Fax: 517.353.8765

Or, make your gift on-line at

<https://www.givingto.msu.edu/gift/?smid=an151>

Gifts may be made to MSU in the form of cash, marketable securities, real estate and various other capital assets and tangible property. In addition, many companies will match an employee's gift with a corporate gift, sometimes at more than a 1-to-1 ratio. Your matching gift credit will count toward membership in one of our donor recognition groups.

**MICHIGAN STATE
UNIVERSITY**

Center for Advanced Study of International Development

International Center
427 North Shaw, Room 202
East Lansing, MI 48824-1035