

Week of October
23

Tuesday, October 25

**“Is Small Still Beautiful?
Farm Size-Productivity
Relationship Revisited in
Kenya”**

Sponsor: Agricultural, Food, and Resource Economics
11:50 a.m., 75 Morrill Hall of Agriculture

Thom Jayne, a University Foundation Professor in the Department of Agricultural, Food, and Resource Economics, and Milu Muyanga, an assistant professor, from the Department of Agricultural, Food, and Resource Economics, will speak.

Research Presentation: Energy

Sponsor: Environmental Science and Public Policy
12:00 p.m., 273 Giltner Hall

Graduate students Mahlet Garedew (Biosystems and Agricultural Engineering), Hamed Najafabadi (Chemistry), and Tsuyoshi Oshita (Media & Information Studies) will be presenting their work.

Rakugo Performance

Sponsors: Asian Studies Center; Chinese Program; College of Arts & Letters; College of Music; Council on Korean Studies; Department of English; Department of Linguistics & Germanic, Slavic, Asian and African Languages; Department of Theater; Global Studies in Arts and Humanities; International Studies and Programs; Japan Center for Michigan Universities; Japan Council; Japanese Program; Korean Program; Ministry of Education, Republic of China (Taiwan); Residential College in the Arts and Humanities
Reception: 6:30-7:00 p.m., RCAH Lookout! Gallery; performance: 7:00-8:00 p.m., Snyder Auditorium

Rakugo is a form of Japanese verbal entertainment. It features a lone storyteller who sits on a stage, using only a paper fan and a cloth as props. The stories have a comedic edge, which keeps the audience laughing.

Wednesday, October 26

“Public Understanding of Science in China”

Sponsors: Asian Studies Center, Office of China Programs, China Research Institute for Science Popularization, College of Communications Arts

In This Issue

Weekly Events: Week of October 23

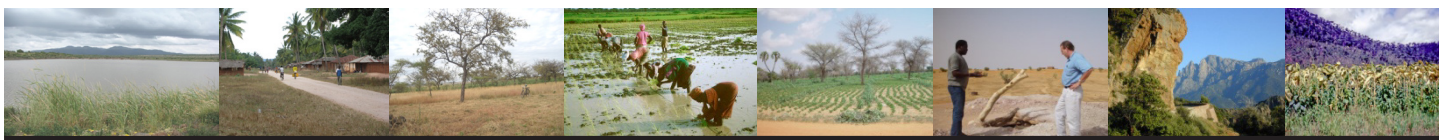
Weekly Events: Week of November 5

Announcements



**MICHIGAN STATE
UNIVERSITY**

Center for Advanced Study of International Development
427 North Shaw Lane
International Center
Room 202
East Lansing, MI 48824-1035
517/353-5925
www.casid.msu.edu



and Sciences, and the Ellis N. Brandt Endowment for Public Relations Research
10:00-11:00 a.m., 303 International Center

Ren Lei, a research assistant at the China Research Institute for Science Popularization Division of Science Literacy Research, will moderate the discussion. Panel members will include Professor Yan Shi and Associate Professor Zhang Chao from the China Research Institute for Science Popularization Division of Science Literacy Research. The China Research Institute for Science Popularization has conducted several civic scientific literacy surveys over the last 20 years

as the basis of national monitoring and evaluation efforts. The survey (n =70,000 in 2015) supports the implementation of an Outline of the National Scheme for Scientific Literacy (2006-2010-2020) and the development of the business of science popularization (SP). The 2015 civic science literacy survey specifically addresses how S&T is affecting Chinese adults in the process of rapid industrialization in China. It includes measures related to Chinese adults' access to S&T information, interest and participation in S&T, civic scientific literacy, and public attitudes toward S&T.

“Africa’s Evolving Employment Trend: Implications for Economic Transformation”

Sponsor: African Studies Center
12:00-1:30 p.m., 201 International Center

Peter Penar, a doctoral candidate in the Department of Political Science and a University Distinguished Fellow, will present his work as part of the African Studies Center’s Eye on Africa seminar series.

Study Abroad Information Sessions

Information meetings are an opportunity to learn about a program from the program leader, find out about applying to study abroad, ask questions and meet with fellow study abroad participants.

Sustainable Food, Environment and Social Systems in Australia Summer 2017

Monday, October 24
4:30-5:00 p.m., 103 Farrall Agricultural Engineering

India: Ecology of the Mountains Summer 2017

Monday, October 24
5:15-6:15 p.m., TBA

Ecological Engineering in the Tropics in Costa Rica Winter Break 2016

Monday, October 24
6:30-7:00 p.m., 103 Farrall Agricultural Engineering

Medical Ethics and Health Policy in London

Monday, October 24
7:00-8:00 p.m., 128 Hubbard

Event, Hospitality and Retail Management - Stenden U, Leeuwarden, the Netherlands

Tuesday, October 25
4:30-5:30 p.m., Eppley 201

Medical Ethics and Health Policy in London

Thursday, October 27
7:00-8:30 p.m., C101 Holmes

Visual Art in Italy Summer 2017

Friday, October 28
11:00 a.m.-12:00 p.m., Kresge Art Center, 116A Student Resource Center 1st Floor

Business and Culture in Spain Spring 2017

Friday, October 28
12:30-1:30 p.m., 7 Eppley Center

Technology, Humanities, and the Arts in London Summer 2017

Wednesday, November 2
6:00-7:00 p.m., W101C in MSU Library (near Sparty’s)

Medical Ethics and Health Policy in London

Wednesday, November 2
7:00-8:00 p.m., 140 Akers

Business in Scotland Summer 2017

Friday, October 4
10:30-11:30 a.m., 301 Eppley Center



Diwan Arabic Tea and Conversation Hour

Sponsor: Asian Studies Center
4:00-5:00 p.m., 305 International Center

Arabic Diwan is a gathering of Arabic students who are in the Arabic program, where they speak the language and learn about the culture in a relaxed environment with our Fulbright teaching assistant. Students from all Arabic language levels are encouraged to attend. We extend the invitation to Arabic-speaking students from the English Center as well. For more information, please email cheikh.sheibe@gmail.com.

Hindi-Urdu Chai and Chat

Sponsor: Asian Studies Center
6:30-7:30 p.m., 302 International Center

Come experience and discuss Indian and South Asian cultures and languages, especially Hindi-Urdu, while sipping spiced tea (chai) and tasting delicious desi snacks. For more information, please email Assistant Professor Rajiv Ranjan at rranjan@msu.edu.

"Culture Crime: Investigating Global Antiquities Trafficking"

Sponsor: Anthropology
7:00 p.m., CIP 115 International Center

Donna Yates, a lecturer in antiques trafficking and art crime at the University of Glasgow's Centre for Crime and Justice Research, will describe two recent antiquities smuggling case studies (Cambodia and India), which display the global reach and structure of the illicit trade in looted artefacts. She will also show how approaches borrowed from criminology, sociology, and anthropology can be applied to these cases to develop effective new measures for protecting heritage.

Program; Korean Program; Ministry of Education, Republic of China (Taiwan); Residential College in the Arts and Humanities
Reception: 6:30-7:00 p.m. RCAH
Lookout! Gallery; performance: 7:00-8:15 p.m., Snyder Auditorium

Nanguan Performance

Sponsors: Asian Studies Center; Chinese Program; College of Arts & Letters; College of Music; Council on Korean Studies; Department of English; Department of Linguistics & Germanic, Slavic, Asian and African Languages; Department of Theater; Global Studies in Arts and Humanities; International Studies and Programs; Japan Center for Michigan Universities; Japan Council; Japanese

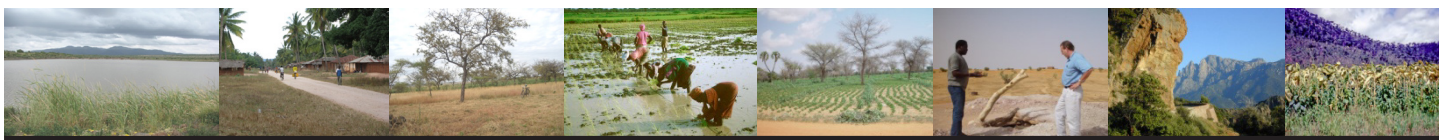
Nanguan is a style of Chinese classical music originating in southern China, it is also extremely popular in Taiwan. Nanguan features traditional southern Chinese music and Taiwanese theater performances.

Thursday, October 27

"Careers in/with Germany"

Sponsor: Linguistics and Germanic, Slavic, Asian and African Languages
4:30-5:30 p.m., B310 Wells Hall





Craig Morris, from the Institute for Sustainability Studies, will speak. Since 2010, he has covered the Energiewende in English at RenewablesInternational.net. He has been writing in the energy sector, mainly on policy, for more than a decade. In 2013-2014, he served as technical editor for IRENA's first roadmap, REmap 2030.

“Energy Democracy”

Sponsor: Linguistics and Germanic, Slavic, Asian and African Languages
7:00-8:30 p.m., B310 Wells Hall

Craig Morris, from the Institute for Sustainability Studies, will speak about his new book, *Energy Democracy*. Since 2010, he has covered the Energiewende in English at RenewablesInternational.net. He has been writing in the energy sector, mainly on policy, for more than a decade. In 2013-2014, he served as technical editor for



IRENA's first roadmap, REmap 2030.

“Hindu Leadership: Changes and Challenges in a New Context”

Sponsors: Asian Studies Center and Religious Studies
7:00 p.m., 307 Bessey Hall

Anantanand Rambachan, a professor of religion at Saint Olaf College, Northfield, Minnesota, will speak. He is currently an advisor to the Pluralism Project (Harvard University), a member of the International Advisory Council for the Tony Blair Faith Foundation, a member of the Theological Education Committee of the American Academy of Religion, and a Trustee of the Council for a Parliament of the World's Religions. This lecture will explore various models and qualifications for religious leadership in the Hindu community, especially in the roles of teachers and ritual specialists. Professor Rambachan will also discuss leadership-related challenges facing the Hindu community now, including issues of caste, gender, training, and transmission of tradition.

P'ansori Performance

Sponsors: Asian Studies Center; Chinese Program; College of Arts & Letters; College of Music; Council on Korean Studies; Department of English; Department of Linguistics & Germanic, Slavic, Asian and African Languages; Department of Theater; Global Studies in Arts and Humanities; International Studies and Programs; Japan Center for Michigan

Universities; Japan Council; Japanese Program; Korean Program; Ministry of Education, Republic of China (Taiwan); Residential College in the Arts and Humanities

Reception: 6:30 - 7:00 p.m., RCAH
Lookout! Gallery; performance 7:00 - 8:00 p.m., Snyder Auditorium

P'ansori is a solo-singer storytelling art designated as Korea's intangible treasure and an UNESCO world oral heritage. Its narrative structure alternates between spoken passages that moves the plot and sung passages that further define the musical poetics. Five classical narratives remain with their vocal stylistics vividly revealing the ancient Korean cultures, beliefs, and expressions.

Friday, October 28

Grad Student Workshop: “Anthropology, Outreach, and the Media-Best Practices for Writing for the General Public”

Sponsor: Anthropology
9:30-11:00 a.m., C103 McDonel Hall

Kristina Killgrove, an assistant professor at the University of West Florida, will guide the workshop. More academics are engaging the public through digital means today, and many are blurring the lines between academia and journalism. There are diverse platforms for disseminating information about research, but outside of journal articles, the most



common tends to be blogs, from the character-limited Twitter to the long-form blog post. This presentation will focus on understanding the science blogging ecosystem, positioning a blog within it, building an audience, and using best practices to craft a piece of scholarly public outreach that people will want to click on and read. Examples will be drawn from Archaeology but with broader disciplinary relevance. RSVP is required: kalmanr1@msu.edu.

Week of October 30

Tuesday, November 1

“Water and Food Nexus in Africa”

Sponsor: Environmental Science and

Public Policy
3:00 p.m., 273 Giltner Hall

Graduate students Rajiv Paudel (Geography), Brad Peter (Geography), Judith Namanya (Geography), and Tula Ngasala (Engineering) will speak as part of the ESPP Research Colloquia. Refreshments will be served.

“Gandhi’s Life-Goal: Political or Spiritual?”

Sponsors: Asian Studies Center, College of Arts & Letters, College of Social Science, Departments of Anthropology, History, Linguistics and Languages, Sociology, Global Studies in the Arts and Humanities, the Honors College, James Madison College, Office of International Students and Scholars, and the Residential College in the Arts and Humanities
5:00 p.m. for reception; 6:00-8:00 p.m. for lecture and conversation, Kellogg Center, Big Ten B

Rajmohan Gandhi, a noted Indian politician, academic, and advocate for tolerance and reconciliation, will speak. While India’s British rulers who faced Gandhi declared that expelling British or white rule was Gandhi’s dominant passion, he himself said he wanted to demonstrate the power of truth and nonviolence. He also often mentioned ‘finding God’ and ‘serving the neediest’ as his aims. This lecture will examine his life, its most powerful motivations, and some of his central concepts, including satyagraha. Rajmohan Gandhi has served in the Indian Senate and as president of Initiatives of Change International, a global nonprofit aiming at reconciliation and trust-building.

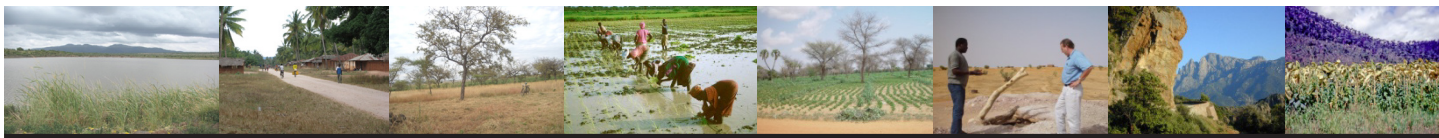
He has been a research professor at the Center for South Asian and Middle Eastern Studies at the University of Illinois at Urbana-Champaign and also the academic director of that campus’s Global Crossroads Living and Learning Community. A grandson of Mahatma Gandhi, Rajmohan Gandhi has published eleven books and has had a distinguished career in journalism.

Wednesday, November 2

Interdisciplinary Dimensions of Tropical Diseases: Finding Funding and Faculty Networking Workshop

Sponsor: Office for International Research Collaboration
3:00-5:00 p.m., 303 International Center

The Office of International Research Collaboration will present information on research funding opportunities and trends in MSU research awards in the fields of tropical diseases, tropical medicine, and related areas of the natural and social sciences. The presentation will be followed by an opportunity for faculty to share their research interests and network with potential new collaborators across disciplines and from across campus. All are welcome. Refreshments will be served. RSVPs are not required, but recommended for OIRC planning: OIRC@ISP.MSU.EDU, (517) 884-0947.



“The Science, Uncertainty and Controversy of Managing Biodiversity Under Climate Change.”

Sponsor: Fisheries and Wildlife
3:30-4:30 p.m., 338 Natural Resources Building

Jessica Hellman, director of the Institute on the Environment and the Russell M. and Elizabeth M. Bennett Professor of Ecology Evolution and Behavior at the University of Minnesota, will speak.

“Sifting Through the Weeds: A Study of Allocative Efficiency Among Malawian Smallholders”

Sponsor: Economics
12:00-1:00 p.m., Koo Room of Marshall-Adams Hall



Sarah Kopper, a graduate student in the Department of Agricultural, Food, and Resource Economics, will speak as part of the Department of Economics' Development Lunch Seminar series.

Diwan Arabic Tea and Conversation Hour

Sponsor: Asian Studies Center
4:00-5:00 p.m., 305 International Center

Arabic Diwan is a gathering of Arabic students who are in the Arabic program, where they speak the language and learn about the culture in a relaxed environment with our Fulbright teaching assistant. Students from all Arabic language levels are encouraged to attend. We extend the invitation to Arabic-speaking students from the English Center as well. For more information, please email cheikh.sheibe@gmail.com.

Hindi-Urdu Chai and Chat

Sponsor: Asian Studies Center
6:30-7:30 p.m., 302 International Center

Come experience and discuss Indian and South Asian cultures and languages, especially Hindi-Urdu, while sipping spiced tea (chai) and tasting delicious desi snacks. For more information, please email Assistant Professor Rajiv Ranjan at rranjan@msu.edu.

“Reflections on India’s 1947 Partition”

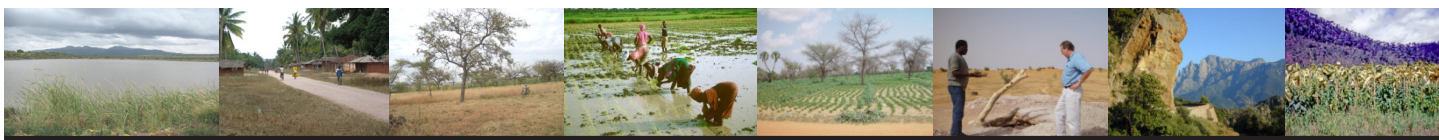
Sponsors: Asian Studies Center, College of Arts & Letters, College of Social Science, Departments of Anthropology, History, Linguistics and Languages, Sociology, Global Studies in the Arts and Humanities, the Honors College, James Madison College, Office of International Students and Scholars, and the Residential College in the Arts and Humanities
7:00-9:00 p.m., 115 International Center

Rajmohan Gandhi, a noted Indian politician, academic, and advocate for tolerance and reconciliation, will discuss India's 1947 partition. Rajmohan Gandhi has served in the Indian Senate and as president of Initiatives of Change International, a global nonprofit aiming at reconciliation and trust-building. He has been a research professor at the Center for South Asian and Middle Eastern Studies at the University of Illinois at Urbana-Champaign and also the academic director of that campus's Global Crossroads Living and Learning Community. A grandson of Mahatma Gandhi, Rajmohan Gandhi has published eleven books and has had a distinguished career in journalism.

Thursday, November 3

African Tea

Sponsor: African Studies Center
4:00-6:00 p.m., 303 International Center



African Tea is an opportunity to learn about and share first-hand experiences on the African Continent. Zambia and Zimbabwe will be the focus of this tea.

Korean Conversation Table

Sponsors: Korean Program, the Council on Korean Studies, and the Asian Studies Center
6:30-7:30 p.m., A-120 and A-122 Wells Hall

No one to talk to in Korean? Frustrated about speaking Korean? Come join us for an hour of conversation in Korean. All levels (beginning to advanced) are welcome. Free and open to the public. For more information, please contact Park Ok-Sook at ospark@msu.edu.

"Gandhi's Religion"

Sponsors: Asian Studies Center, College of Arts & Letters, College of Social Science, Departments of Anthropology, History, Linguistics and Languages, Sociology, Global Studies in the Arts and Humanities, the Honors College, James Madison College, Office of International Students and Scholars, and the Residential College in the Arts and Humanities
5:30-7:00 p.m., Case Hall, Club Spartan

Rajmohan Gandhi, a noted Indian politician, academic, and advocate for tolerance and reconciliation, will speak. Though he called himself a 'sanatani' (traditional) Hindu, loved the Hindu devotional epic, the *Ramayana*, and wrote a commentary on one of Hinduism's scriptures, the *Bhagavad Gita*, Gandhi was also deeply influenced by

the *Bible*, especially the Sermon on the Mount. Moreover, in his last twenty years, the proposition 'Truth is God' seemed to appeal more to him than 'God is Truth'. Also, he was a (if not the) pioneer in multi-faith prayers. What exactly were Gandhi's religious beliefs? This lecture will attempt an answer. Rajmohan Gandhi has served in the Indian Senate and as president of Initiatives of Change International, a global nonprofit aiming at reconciliation and trust-building. He has been a research professor at the Center for South Asian and Middle Eastern Studies at the University of Illinois at Urbana-Champaign and also the academic director of that campus's Global Crossroads Living and Learning Community. A grandson of Mahatma Gandhi, Rajmohan Gandhi has published eleven books and has had a distinguished career in journalism.

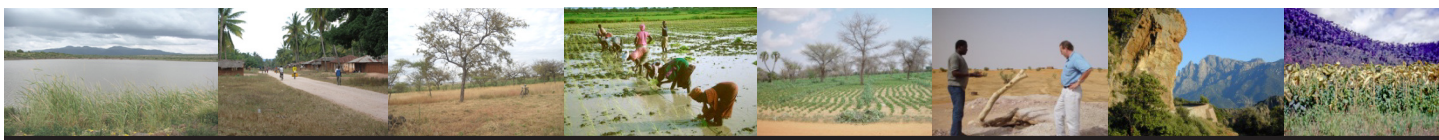


Friday, November 4

"Theater and Early Cinema in Italian Fiction"

Sponsor: Romance and Classical Studies
4:00-6:00 p.m., B342 Wells Hall

Published in 1915, Luigi Pirandello's novel *Si gira... [Shoot...]* set in the world of early cinema represents one of the highpoints in film discourse in the early twentieth century. This talk analyzes narratives of stardom and celebrity in the years surrounding WWI that contribute to the emergence of a "literature" of early Italian cinema.



Announcements

Alliance for African Partnership, Michigan State University Request for Proposals

Applications are due November 21, 2016.

The Michigan State University Alliance for African Partnership (AAP) is inviting proposals for its initial partnership activities in 2017. As a university-wide initiative, AAP invites proposals from diverse disciplinary perspectives that support the pillars of Building Bridges, Transforming Institutions, and Transforming Lives, as well as the priority areas of:

- Agri-food systems
- Water, energy and the environment
- Youth employment
- Education
- Cultural heritage development
- Health and nutrition

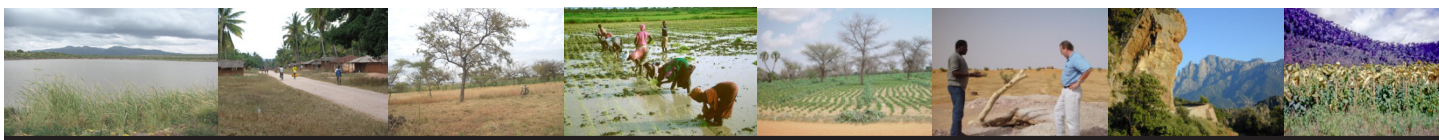
Successful proposals will be submitted by teams that include both MSU faculty and partners from African universities and/or organizations and should be designed to lay the foundation for longer duration and sustainable partnerships between MSU and African partners. Grants awarded will range from \$50,000 to \$200,000 for projects to be carried out over an 18-month time frame, beginning between March 1 and June 1, 2017. Proposals must be submitted by November 21, 2016, for consideration. For additional information or to apply, please access the AAP call for proposals.

Beinecke Scholarship Program

Applications are due December 1, 2016.

The National and International Fellowships and Scholarships (NIFS) Office is encouraging undergraduate students to begin thinking about an application for the Beinecke Scholarship. Students must want to pursue an advanced degree in the arts, humanities or social sciences. They must also currently be a college junior pursuing a bachelor's degree during the 2016-2017 academic year, a U.S. citizen, have a documented history of receiving need-based financial aid during undergraduate years and a 3.0+ GPA. For more information, please visit the NIFS website at nifs.msu.edu.





Announcements

Blakemore Freeman Fellowships for Advanced Asian Language Study

Applications are due December 30, 2016.

Grants for college graduates, graduate students, and working professionals for an academic year of advanced language study. The Blakemore Foundation provides its fellows with tuition plus a stipend to cover travel and living expenses at eligible language programs in East and Southeast Asia. Blakemore Freeman Fellows have found careers using an Asian language at a professional level in international business, accounting, law, medicine, journalism, STEM (science, technology, engineering, math), architecture, academia/teaching, social and NGO work, and government/public service. To apply online, please visit blakemorefoundation.org.

Schoenl Family Undergraduate Grant for Dire Needs Overseas

Applications are due February 25.

The purpose of the Schoenl Family Undergraduate Grant for Dire Needs Overseas is to identify and fund the most outstanding projects that will serve dire human needs in countries other than the U.S. The grants must be used within a 12-month period to make an impact that will help alleviate dire human needs. The amount awarded depends on available funds and project scope. Typical grant funding is \$1,200 for a level I award and \$1,800 for a level II award. Applications are available August 31. Inquiries should be directed to hcgloba@msu.edu.

ESPP-AgBioResearch Interdisciplinary Team Building Initiative

Application deadlines are April 15 and December 2, annually.

The Environmental Science and Policy Program and MSU AgBioResearch at Michigan State University are pleased to announce the next solicitation of Interdisciplinary Team Building Initiative (ITBI) proposals. The ITBI funding program is designed to promote collaboration among faculty researchers from different disciplines, with the goal of enhancing our capacity to grow broadly defined interdisciplinary environmental scholarship and to compete for external grants. The ITBI grants support the formation and operation of multiple workgroups centered on strategically important research areas including, but not limited to, water, global climate change, bioeconomy, invasive species, antimicrobials, and food systems. A workgroup consists of a small number (e.g., 2-5) of core faculty members from multiple disciplines who interact regularly with the goal of writing grant proposals, developing an interdisciplinary curriculum, or working on major multidisciplinary publications. Workgroup activities might include group meetings, presentations by group members, identification of and responses to grant opportunities, etc. Workgroup members are expected to maintain regular interactions towards clearly specified workgroup goals. The funds can be used for group meetings, workshops, visitors and invited speakers, travel to funding agencies, preliminary research, etc. Unlike a typical seed grant, an ITBI grant primarily supports interactions of faculty members who otherwise do not have the opportunity to collaborate. The initiative is open to all MSU faculty members. An ITBI grant will provide funding for two years with a total amount of up to \$10,000.



MICHIGAN STATE
UNIVERSITY

Center for Advanced
Study of International
Development
427 North Shaw Lane
International Center
Room 202
East Lansing, MI
48824-1035
(517) 353-5925

www.casid.msu.edu

