

Week of November 8

Monday, November 9

Pláticas: Conversation Hour

Sponsor: MSU Spanish Club
5:30–6:30 p.m., MSU Union, in front of the post office

Listen, chat and meet other Spanish speakers at Pláticas (conversation hour). The program is facilitated by MSU Spanish instructors and the MSU Spanish Club.

“Environmental Conservation on the Tibetan Plateau: Opportunities and Dilemmas”

Sponsor: Environmental Science and Policy Program
12:00–1:00 p.m., 338 Natural Resources Building

Tsering Bum, an environmental conservationist at the Shanshui Conservation Center in China, will be speaking. The Tibetan Plateau is known as the third pole because of its high altitude and the water tower of Asia because it is the source of several great rivers. It is home to more than 5 million Tibetans whose livelihoods and cultural practices depend on the region. Due to its ecological importance, both the Chinese government and civil organizations have

been working to protect the region’s ecosystems. Shanshui Conservation Center—a Chinese environmental conservation NGO headquartered at Peking University—has been working with local communities at the source region of the Mekong, Yangtze and Yellow rivers on the Tibetan Plateau in Qinghai Province of western China for the past decade to deal with issues of resource management, wildlife monitoring, human-wildlife conflict resolution, etc. Drawing on examples of Shanshui’s work, Tsering Bum will talk about the state of the environment and environmental conservation in Qinghai Province, with particular focus on local community involvement in dealing with human-wildlife conflict and resource management.

Film Screening: “When Elephants Fight”

Sponsor: Residential College in the Arts and Humanities
5:00–7:00 p.m., Residential College in the Arts and Humanities Theater, terrace level of Synder Hall

The film is being shown in connection with the exhibit “Courage Ablaze: The Women and Children of Congo” and focuses on extractive industries in the Democratic Republic of Congo. Flint filmmaker Mike Ramsdell will speak following the film.

In This Issue

Weekly Events: Week of November 8

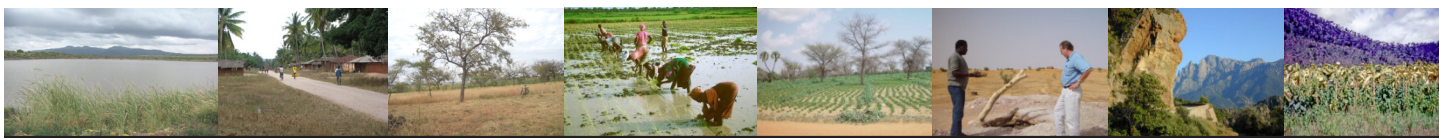
Weekly Events: Week of November 15

Announcements



MICHIGAN STATE UNIVERSITY

Center for Advanced Study of International Development
427 North Shaw Lane
International Center
Room 202
East Lansing, MI 48824-1035
517/353-5925
www.casid.msu.edu



Food, Energy, Water and Abundance Workshop

Sponsors: U.S. National Science Foundation, MSU AgBio Research, Environmental Science and Policy Program, Department of Community Sustainability, and International Studies and Programs Kellogg Hotel and Conference Center (Lincoln Room)
November 9-11, 2015

This symposium is part of a three-day workshop on the food-energy-water nexus, funded by the National Science Foundation. Discussions will focus on three regions: North America's Great Lakes region, East Africa's Great Lakes, and the Amazon River basin. The first day will be organized as a symposium, with plenary sessions related to each of the three watersheds, and it is open to the public. Days two and three will be organized like a workshop, with focused discussions among scientists around regional governance. MSU faculty and graduate students are invited to participate in the entire event, as schedules allow.

The workshop will bring together scientists, researchers and policymakers from three selected regions of the world characterized by abundant water resources subject to recent pressures:

- North America's Great Lakes, the largest freshwater system on Earth, facing increasing pressure from agricultural runoff and invasive species and eyed covetously by drier regions;
- East Africa's Great Lakes region, which is facing rapid eutrophication, diminishing productivity of inland fisheries and increased threats to the livelihoods of rural communities; and
- South America's Amazon River, the largest river system on Earth, facing increasing pressure from hydroelectric development and resulting collapse of fisheries.

The objectives of the workshop are to examine the stresses on food and energy systems and identify gaps in knowledge about cross-border governance under relative abundance of water resources in large watersheds. For more information, please see: <https://environmentmsu.givezooks.com/events/food-energy-water-and-abundance-workshop>.

Tuesday, November 10

Courage Ablaze: The Women and Children of Congo Presentations

Sponsor: Residential College in the Arts and Humanities
 5:00–7:00 p.m., Residential College in the Arts and Humanities Theater, terrace level of Synder Hall

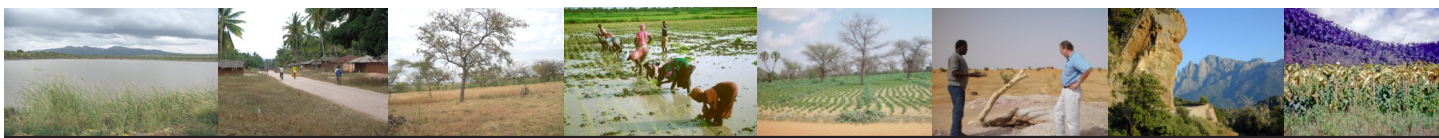
This presentation is designed to raise awareness of the war on innocent civilians in Eastern Democratic Republic

of Congo. Pastor Kizombo Kalumbula, a U.S.-naturalized Congolese professor and director of International Berean Ministry, will present the reasons for the conflict and the complex history of the region. Artist Pamela Alderman will share the tragic stories of Congolese refugees that she has recorded in word and portraits, and discuss our connection to the troubles they have experienced. The Les Clay Family Singers, a Congolese refugee family choir, will close the program by singing Congolese songs in French, Lingala, and Swahili.

"Shi'i Cosmopolitanisms in Africa: Lebanese Migration and Religious Conversion in Senegal"

Sponsor: Muslim Studies Program
 3:00 p.m., 303 International Center

Mara Leitchman, a professor from the Department of Anthropology, will speak.



**(Tuesday, November 10
Continued)**

“Improving Market Participation Through Higher Fertilizer Use — Farms in Mali”

Sponsor: Agriculture, Food, and Resource Economics
11:50 a.m.–1:00 p.m., 75 Morrill Hall of Agriculture

Ange Kakpo, a graduate student in Agriculture, Food, and Resource Economics (AFRE), will speak as part of the AFRE Brown Bag Seminar Series.

Korean Coffee House

Sponsors: Asian Studies Center and the Council of Korean Studies
6:30 p.m.–7:30 p.m., 303 International Center

Learn about Korean culture, music,

food, and more during the other coffee house events. For more information, email Ok-Sook Park at ospark@msu.edu.

Wednesday, November 11

“Enhancing the Student Experience: Adding an Undergraduate Research Component to your Study Abroad Program “

Sponsors: Office of Study Abroad and the Office of Faculty and Organizational Development
11:30 a.m.–1:00 p.m., Lake Superior Room, MSU Union

Student success is at the heart of MSU’s Bolder by Design Initiative. High-impact learning opportunities play an important role in this context since they can improve students’

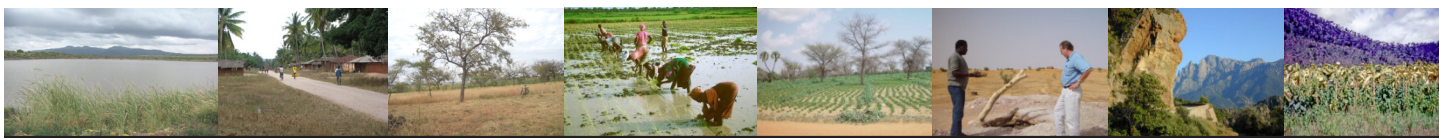
academic performance and accelerate their graduation. High-impact learning happens when students are actively engaged in their learning and when learning is applied in their personal and work environments. This workshop will showcase one of these components of high-impact education abroad practices: undergraduate research. Join us for an engaging panel discussion and connect with experts on this topic. Lunch will be provided. Registration is free, but required. Please see: <http://fod.msu.edu/events/enhancing-student-experience-adding-undergraduate-research-component-your-study-abroad>.

“What We Have Already and Have Still to Learn from Historical Unethical Research”

Sponsor: Center for Ethics and Humanities in the Life Sciences, MSU College of Medicine
12:00–1:00 p.m., C102 East Fee Hall

Kayte Spector-Bagdady, a research fellow at the University of Michigan’s Center for Bioethics and Social Sciences in Medicine, will speak. She focuses on the collective impact of laws, institutional policies, and ethics on equitable access to healthcare. Previously she served as associate director at the Presidential Commission for the Study of Bioethical Issues. There, she supervised staff work on the ethics of the U.S. response to the Ebola epidemic, returning incidental findings, and whole genome sequencing, and was a lead staff investigator and author for the report “Ethically Impossi





(Wednesday, November 11 Continued)

ble: STD Research in Guatemala from 1946 to 1948." Feel free to bring your lunch. Beverages and light snacks will be provided.

"From 21 Ramadan to 22 Av: One Month in Jerusalem, Summer 2015"

Sponsors: Asian Studies Center, Muslim Studies, Jewish Studies, and the Department of Anthropology
12:00–1:00 p.m., 457 Berkey Hall

Deborah Margolis, the Middle East studies biographer at MSU Libraries, traveled to the Middle East this past summer as part of her work. Ms. Margolis will share some of what she learned about Jerusalem, gained through conversations, experiences, observations, readings and lectures. In Jerusalem, Ms. Margolis worked

with the MSU Jewish Studies summer study abroad course, Communities, Identities, and Intergroup Relations in Jerusalem and Galilee, taught by anthropologist Chen Bram (visiting professor at MSU 2013-14). She also visited libraries and collected materials for the MSU Libraries. Deborah Margolis will share stories and photos of particular places and times from one month in Al-Quds/Yerushalayim: holy to the three Abrahamic religions, contested by and within two national groups.

Turkic Chay and Chat

Sponsors: Asian Studies Center and the Center for European, Russian and Eurasian Studies
4:30–6:00 p.m., 204 International Center

Turkic Chay and Chat is a free, interactive gathering established for those MSU students who are currently studying one of the Turkic languages

and for those who have taken Turkic language courses previously. For more information, contact: timur@msu.edu.

Hindi-Urdu Chai and Chat

Sponsors: Asian Studies Center and the India Council
6:00 p.m., 303 International Center

Experience and discuss Indian and South Asian cultures and languages, especially Hindi/Urdu, while sipping spiced tea (chai) and tasting delicious desi snacks. This event is free and open to everyone. The November meeting will be a Divali celebration. For more information, email Rajiv Ranjan, MSU's Hindi lecturer and resident chaivala, at rranjan@msu.edu.

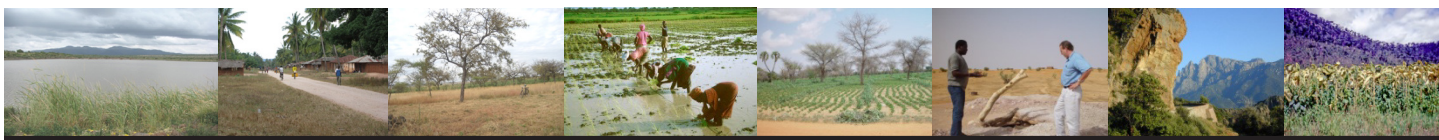
Thursday, November 12

"Finding Funding for Research in Africa and Faculty Networking"

Sponsor: Office of International Research Collaboration
3:00–5:00 p.m., 106 Kellogg Center

The Office of International Research Collaboration will share information on upcoming funding opportunities in Africa and provide faculty with an opportunity to share their research interests and network with potential new collaborators from across campus. All faculty are welcome. RSVP not required, but encouraged: oirc@isp.msu.edu or (517)884-0947.





(Thursday, November 12 Continued)

“Understanding Perceived Access to Water in Uganda: Association with Established Measures of Access and Health”

Sponsor: Africa Studies Center
12:00–1:30 p.m., 201 International Center

Amber Pearson, an assistant professor from the Department of Geography, will speak as part of the African Studies Centers’ Eye on Africa Seminar Series.

African Tea

Sponsor: African Studies Center
4:00–6:00 p.m., 303 International Center

This is an opportunity to learn and share about first-hand experiences on the African continent. Egypt, Libya and Morocco will be the focus of this tea.

“Founding Nation, Founding History: Pakistan and the Origins of Islam in South Asia”

Sponsors: Asian Studies Center, Global Studies in the Arts and Humanities, Muslim Studies Program, Film Studies Program, Department of Religious Studies, Department of History, and the Department of English
4:00–5:50 p.m., A126 Wells Hall

Manan Ahmed Asif, an assistant professor of history at Columbia University, will speak. Manan Ahmed is interested in the relationship between text, space, and narrative. His work on Islam’s arrival to Sindh in the eighth century traces the long term history of contestations among varied communities in South Asia. His areas of specialization include political and cultural history of Islam in South and Southeast Asia, frontier-spaces and the city in medieval South Asia, imperial and colonial historiography, and philology.

“Land Use, Cattle Systems and Community Livelihoods: Agrarian Vulnerability in Colombia”

Sponsor: Animal Science
10:30 a.m.–12:00 p.m., 1310 Anthony Hall

Robert Blake, a professor in the Department of Animal Science, and Nanda Joshi, an assistant professor in the Department of Animal Science, will speak.

“Land Rights and Socially Responsible Investment in Agriculture in Africa”

Sponsor: The MasterCard Foundation Program at Michigan State University
3:00–4:30 p.m., 110 Chittenden Hall

Tizai Mauto, a land tenure specialist at Landesa, Felix Kwame Yeboah, assistant professor in the Department of Agricultural, Food, and Resource Economics, and Gretchen Neisler, director of the Center for Global Connections, will speak as part of a panel moderated by John Kerr, a professor in the Department of Community

International Education Week Special Events

The Office of Study Abroad and the Office for International Students Essay Contest Reception

Friday, November 13
4:00–6:00 p.m., Broad Art Museum

Passport Day

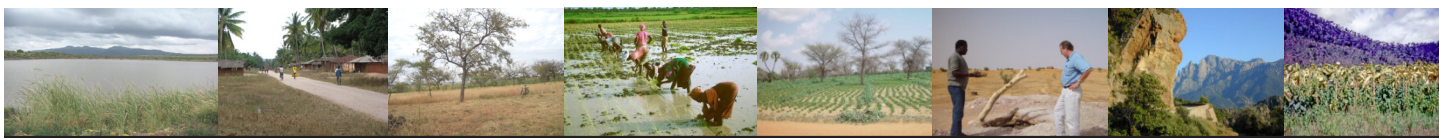
Wednesday, November 18
10:00 a.m.–4:00 p.m., International Center Lobby

Fourth Annual Learning Abroad Conference

Friday, November 20
12:00–7:00 p.m., International Center

2015 Global Festival

Sunday, November 22
1:00–6:00 p.m., MSU Union



(Thursday, November 12 Continued)

Sustainability. The current controversy about large-scale land acquisitions by foreign investors in Africa has put land rights, responsible agricultural investment, and implications for women and girls in a prominent place on the international development agenda. The panelists will explore potential threats posed to the land rights and livelihoods of farmers, as well as approaches for promoting good land governance and responsible investment in agriculture.

and Scholars
4:00–6:00 p.m., Eli and Edythe Broad Art Museum

Join the Office for International Students and Scholars and the Office of Study Abroad for a special coffee hour at the Broad Museum to honor all of the students who submitted entries to the International Student and Study Abroad Essay Contests. First prize winners from each contest will read their essays aloud, while second and third place winners and honorable mentions will be officially recognized. Everyone has an interesting story to tell about their experiences and this is a chance to appreciate those who shared their stories with all of us. Refreshments will be served.

4:30–6:30 p.m., 302 International Center

Arabic Diwan is a gathering of Arabic students of the Arabic program where they speak Arabic and learn about the culture in a relaxed and comfortable environment with a Fulbright Program teaching assistant Amr Abdulla from Egypt. Students from all Arabic levels are encouraged to attend, as well as Arabic-speaking students at the English Center. This is an opportunity to meet learners of Arabic, make friends, and exchange language and cultural knowledge. For more information, please contact Amr Rabie at rabieamr@msu.edu.

Friday, November 13

Essay Contest Reception

Sponsors: Office of Study Abroad and the Office for International Students

Arabic Tea and Conversation Hour

Sponsors: MSU Arabic Flagship, Arabic Program, and the Asian Studies Center

Week of November 15—International Education Week

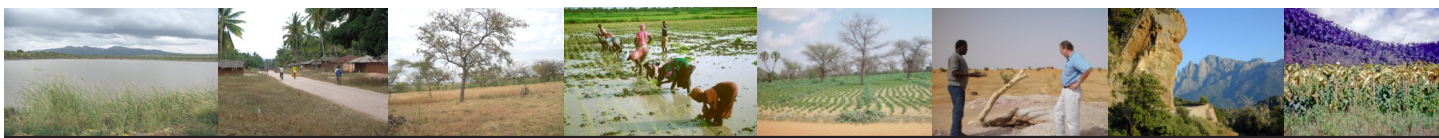


Monday, November 16

Pláticas: Conversation Hour

Sponsor: MSU Spanish Club
5:30–6:30 p.m., MSU Union, in front of the post office

Listen, chat and meet other Spanish speakers at Pláticas (conversation hour). The program is facilitated by MSU Spanish instructors and the MSU Spanish Club.



Tuesday, November 17

MSU French Club

Sponsor: MSU French Club
7:30 p.m., A124 Wells Hall

Come to the biweekly general member meeting for francophone activities and discussions, updates on upcoming events, and a friendly inclusive environment.

Abdiqani Ahmed Farah Talk

Sponsor: African Studies Center
12:00–1:20 p.m., 303 International Center

Abdiqani Ahmed Farah, an environmental scientist at the Somali Institute of Environmental Science and an Africa Studies Association presidential fellow, will speak as part of the African Studies Center's Eye on Africa Seminar Series.

"Antígona Furiosa"

Sponsors: Center for Latin American and Caribbean Studies and the Department of Romance and Classical Studies
6:00–8:00 p.m., C20 Snyder Hall

An Adaptation of the play "Antígona Furiosa" by Griselda Gambaro will be performed. Immediately after the play, a roundtable discussion with graduate students from the Depart-

ment of Romance and Classical Studies will be moderated by Associate Professor Anthony Grubbs. Associate Professor Elvira Sánchez-Blake will introduce the play. A reception will follow the event.

Korean Coffee House

Sponsors: Asian Studies Center and the Council on Korean Studies
6:30–7:30 p.m., 303 International Center

Learn about Korean culture, music, food, and more during the other coffee house events. For more information, email Ok-Sook Park at ospark@msu.edu.

Wednesday, November 18

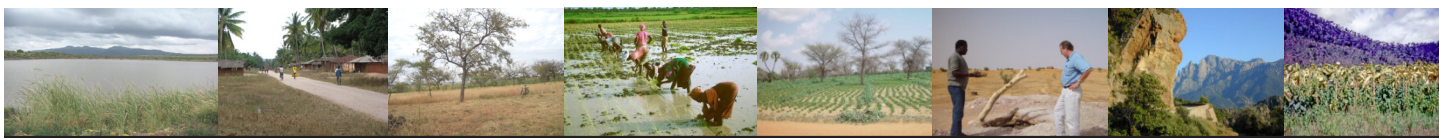
"Earth Patterns from Afar —

a Challenging Perspective"

Sponsor: Department of Geography
7:00 p.m., N130 at the Business College Complex

This presentation will feature Roberta Bondar, who was the first Canadian woman and the world's first neurologist to fly in space. Dr. Bondar—astronaut, physician, and photographer—expanded the horizons of millions as an international crew member aboard the space shuttle Discovery for its 1992 mission STS-42. She will discuss her observations of Earth's physical patterns and human-environment interactions using compelling imagery from space. Having headed an international research team working for over a decade with NASA to investigate connections between astronauts recovering from the microgravity of space and neurological illnesses on Earth, Dr. Bondar will also include commentary on the readiness of human beings to land on Mars. Her





(Wednesday, November 18 Continued)

techniques have been used in clinical studies at the B. I. Deaconess MedicCenter, a teaching hospital of Harvard Medical School, and at the University of New Mexico. This event is free and open to the public.

“IPM Intervention in Benin: Cowpea Farmers’ Preferences for Biological Versus Chemical Pest Control Strategies for Maruca Vitrata”

Sponsor: Economics
12:00–1:00 p.m., 75 Morrill Hall of Agriculture

Michael Agyekum, a research associate with the MSU Center for Global Connections, will speak as part of the Department of Economics’ Economic Development Lunch Seminar Series.

Passport Day

Sponsors: Office of Study Abroad and the Lansing City Clerk’s Office
10:00 a.m.–4:00 p.m., International Center Lobby

Students, faculty and staff can submit passport applications without leaving campus.

Thursday, November 19

“The Effects of Conventional

and Unconventional Monetary Policy”

Sponsor: Agriculture, Food, and Resource Economics
3:30–5:00 p.m., 75 Morrill Hall of Agriculture

Wan Wei, a doctoral candidate at Western Michigan University, will speak at the Agriculture, Food, and Resource Economics’ Weekly Seminar Series.

Global Business Club of Mid-Michigan: “Utilizing MSU’s International Student Talent to Further Your International Business Ventures”

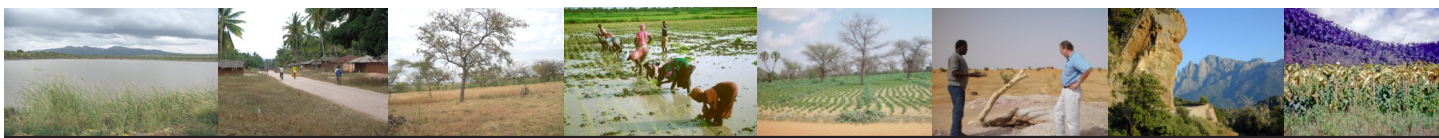
Sponsors: Lansing Regional Chamber of Commerce; Lansing Community

College; the Center for Advanced Study of International Development and the Center for Gender in Global Context; Foster, Swift, Collins & Smith, P.C., The Greater Lansing Business Monthly

5:00–7:30 p.m., Kellogg Hotel and Conference Center

This reception-style event will offer the opportunity to learn more about hiring MSU students that have the language skills and cultural insights in order to help companies successfully bring their business into new international markets. They will discuss the benefits and processes of hiring interns as well as long-term hires. A panel of business people and students will discuss their experiences working together and answer your questions. The keynote speaker will be Ryan Lamp from FosterSwift Law Firm. The cost of the event is \$35, or \$15 for students. To resister, please see: <http://gbclub.msu.edu>.





Friday, November 20

Learning Abroad Conference

Sponsor: Office of Study Abroad, Office for International Students and Scholars, and the Faculty Learning Community on Teaching and Learning Abroad

12:00–7:00 p.m., International Center

Michigan State University will be hosting the Fourth Annual Learning Abroad Conference. The conference features presentations from students who returned from international learning experiences and international students currently studying here in East Lansing. The presentations in-

clude a variety of formats from poetry, videos, journal entries, music compositions, and more. The conference gives voice to the student experience through a variety of creative media so fellow students, as well as the greater MSU community, can better understand the nature and impacts of student learning abroad. For more information, please see: (<http://study-abroad.isp.msu.edu/lac/>).

Arabic Tea and Conversation Hour

Sponsors: MSU Flagship, Arabic Program, and the Asian Studies Center
4:30–6:30 p.m., 302 International Center

Arabic Diwan is a gathering of Arabic students of the Arabic program where they speak Arabic and learn about the culture in a relaxed and comfortable environment with a Fulbright Program teaching assistant Amr Abdulla from Egypt. Students from all Arabic levels are encouraged to attend, as well as Arabic-speaking students at the English Center. This is an opportunity to meet learners of Arabic, make friends, and exchange language and cultural knowledge. For more information, please contact Amr Rabie at rabieamr@msu.edu.





Study Abroad Information Sessions

Information meetings are an opportunity to learn about a program from the program leader, find out about applying to study abroad, ask questions and meet with fellow study abroad participants.

Summer Engineering in Madrid

Monday, November 9
4:00–5:00 p.m., 2220 Engineering Building

International Internships (Communication Arts and Sciences Majors Only)

Tuesday, November 10
3:15–4:15 p.m., 191 Communication Arts and Sciences

Internships in Argentina

Wednesday, November 11
5:00–6:00 p.m., A128 Wells Hall

Universidad San Francisco de Quito

Wednesday, November 11
5:00–6:00 p.m., A128 Wells Hall

Spanish for the Healthcare Professions

Wednesday, November 11
5:00–6:00 p.m., A128 Wells Hall

Hispanic Studies in Valencia, Spain

Wednesday, November 11
5:00–6:00 p.m., A128 Wells Hall

Internships in Barcelona

Wednesday, November 11
5:00–6:00 p.m., A128 Wells Hall

Spanish Language, Literature and Culture in Valencia

Wednesday, November 11
5:00–6:00 p.m., A128 Wells Hall

Intensive Intermediate Spanish in Santander

Wednesday, November 11
5:00–6:00 p.m., A128 Wells Hall

Marathon of Majors

Wednesday, November 11
5:00–7:00 p.m., MSU Union ballroom (2nd floor)

Public Health in Ghana: Methods for Community Practice

Wednesday, November 11
5:30–7:00 p.m., A104 Wells hall

Chinese Language and Culture at Zhejiang University

Thursday, November 12
4:00–5:00 p.m., B243 Wells Hall

Chinese Language and Culture in Chengdu

Thursday, November 12
4:00–5:00 p.m., B243 Wells Hall

Internships in China

Thursday, November 12
4:00–5:00 p.m., B243 Wells Hall

Event, Hospitality, and Retail Management at Stenden University

Thursday, November 12
5:00–6:00 p.m., 201 Eppley Center

Business in Scotland

Friday, November 13
10:30–11:30 a.m., 301 Eppley Center

Business and Culture in Japan

Friday, November 13
10:30–11:30 a.m., 408 Eppley Center

James Madison College Study Abroad Fair

Friday, November 13
1:00–3:00 p.m., Case Hall, (3rd floor) Club Spartan

Global Finance Studies in Belgium

Friday, November 13
3:00–4:00 p.m., N21 Business Complex

Ecology in the Mountains (India)

Monday, November 16
12:30–1:30 p.m., 130 Natural Resources Building

Italian Language, Literature and Culture in Florence

Monday, November 16
4:00–6:00 p.m., B243 Wells Hall

Greece and Turkey: Contemporary Culture, Politics and Society

Monday, November 16
7:00–8:00 p.m., 122 Berkey Hall

Britain and the World: Politics, Love and Conflict

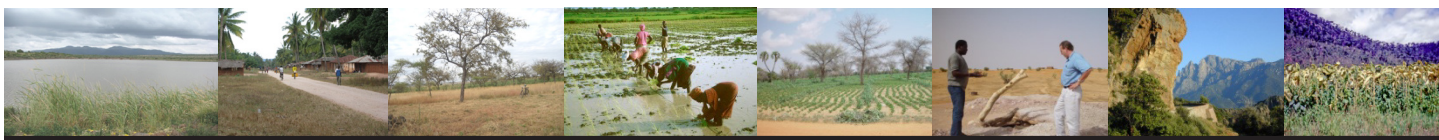
Thursday, November 19
4:30–5:30 p.m., 114 Bessey Hall

Europe at War: Politics, Love and Conflict

Thursday, November 19
4:30–5:30 p.m., 114 Bessey Hall

International Business Management in Western Europe (the Benelux Countries)

Thursday, November 19
4:30–5:30 p.m., 117 Eppley Center



Current Exhibitions

Courage Ablaze: The Women and Children of Congo

RCAH LookOut! Art Gallery, Snyder Hall, terrace level

November 2-19, 2015

From November 2-19, LookOut! Art Gallery will host “Courage Ablaze: The Women and Children of Congo,” an installation by Grand Rapids artist Pamela Alderman that honors and informs about the experiences of women and children during the decades of war in the Democratic Republic of Congo.

Material Effects

November 6, 2015 - April 3, 2016

Sponsor: The Eli and Edythe Broad Art Museum

A major new exhibition examining the work of contemporary artists from West Africa and the diaspora will premiere at the Broad Museum. The exhibition features work by Bernard Akoi-Jackson, Jelili Atiku, Ibrahim Mahama, Otobong Nkanga, and Zohra Opoku, as well as a video work by German artist Antje Majewski presenting a portrait of pioneering Senegalese sculptor and performance artist Issa Samb. Featuring a range of media, including video art, sculpture, performance, and installation. *Material Effects* will explore each artist’s use of and reflections upon the symbolic, commercial, and practical value of man-made and natural materials. A more extensive description of the exhibit and event details are available at: <http://broadmuseum.msu.edu/exhibitions/material-effects>.

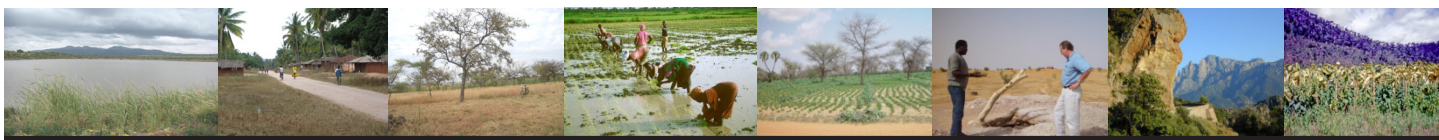
Announcements

The Critical Language Scholarship Program

Application Deadline: Monday, November 23, 2015



The Critical Language Scholarship (CLS) Program is a fully-funded overseas language and cultural immersion program for American undergraduate and graduate students, funded by the U.S. Department of State. With the goal of broadening the base of Americans studying and mastering critical languages and building relationships between the people of the United States and other countries, CLS provides opportunities to a diverse range of students from across the United States at every level of language learning. Languages offered include: Arabic, Azerbaijani, Bangla, Chinese, Hindi, Indonesian, Japanese, Korean, Persian, Punjabi, Russian, Swahili, Turkish, and Urdu.



(The Critical Language Scholarship Program Continued)

The CLS Program seeks participants with diverse interests, from a wide variety of fields of study, backgrounds and career paths, with the purpose of representing the full diversity of the United States. Thus, students from all academic disciplines, including business, engineering, law, medicine, science, social sciences, arts and humanities are encouraged to apply.

There is no service requirement for CLS Alumni after the program. However, participants are expected to continue their language study beyond the scholarship period, and later apply their critical language skills in their professional careers. Participants are selected based on their commitment to language learning and plans to apply their language skills to their future academic or professional pursuits.

For more information and application materials, please visit: <http://www.clscholarship.org/>.

NSEP David L. Boren Scholarship for Study Abroad



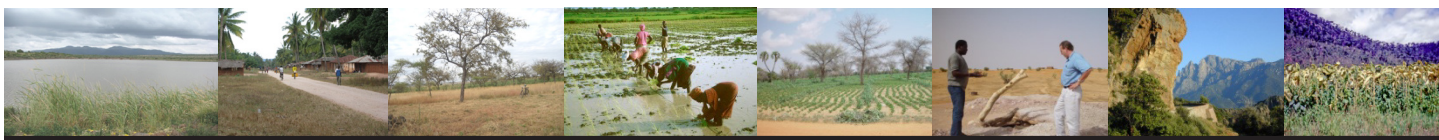
Application Deadline: Tuesday, December 1, 2015

Boren Scholarships provide up to \$20,000 to U.S. undergraduate students to study abroad in areas of the world that are critical to U.S. interests and underrepresented in study abroad, including Africa, Asia, Central and Eastern Europe, Eurasia, Latin America, and the Middle East. The countries of Western Europe, Canada, Australia, and New Zealand are excluded.

Boren Scholars represent a variety of academic backgrounds, but all are interested in studying less commonly taught languages, including but not limited to Arabic, Chinese, Korean, Portuguese, Russian, and Swahili.

Boren Scholarships are funded by the National Security Education Program (NSEP), which focuses on geographic areas, languages, and fields of study deemed critical to U.S. national security. Applicants should identify how their study abroad program, as well as their future academic and career goals, will contribute to U.S. national security, broadly defined. NSEP draws on a broad definition of national security, recognizing that the scope of national security has expanded to include not only the traditional concerns of protecting and promoting American well-being, but also the challenges of global society, including sustainable development, environmental degradation, global disease and hunger, population growth and migration, and economic competitiveness.

For more information, please visit the MSU NIFS website: <https://nifs.msu.edu/awards/nsep-david-l-boren-scholarship>.



Spring 2016 Internships through the Center for Gender in Global Context

The deadline for applications for spring 2016 internships coordinated through the Center for Gender in Global Context (GenCen) has been extended to Sunday, November 15.

If you have an internship or community engagement requirement to fulfill for your major, the Center for Gender in Global Context internship program offers internship coordination services and support to MSU undergraduate and graduate students interested in gender issues related to social justice, human rights, community development, reproductive health, domestic violence, and/or environmental health and justice. The internship is designed to help students explore gender-related career fields while gaining valuable hands-on experience at local, national or international organizations.

Internship Details

- Work with the GenCen Internship Coordinator to find the right organization for you and to arrange for MSU credit
- Flexible schedules—fall and spring internships are typically 10 hours per week
- Students can complete international GenCen internships along with some MSU study abroad programs
- Advanced undergraduate and graduate students are encouraged to apply
- Most internships are unpaid, however some offer work-study to eligible students. Students are encouraged to contact the GenCen internship coordinator to discuss upcoming scholarship opportunities.

For more information, including an application and lists of potential local, national, and international internship opportunities, please go to <http://gencen.isp.msu.edu/academics/internships.htm>. Electronic submissions are encouraged. Students interested in international internships should contact the GenCen Internship Coordinator at gencenad@msu.edu as soon as possible to discuss programs and specific deadlines.

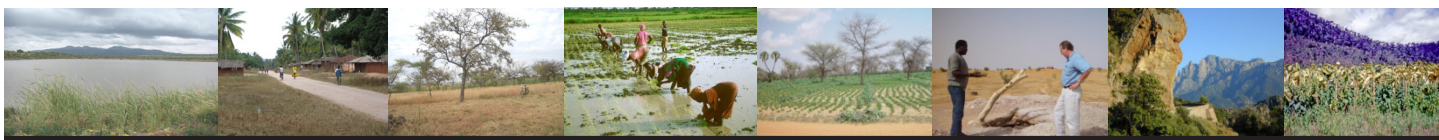
TASTE of AFRICA

Presented by Kongamano

Friday, November 6, 2015
McDonel Hall Lower Level
6:00–9:00 pm

Come cook and eat authentic African foods such as chapati, mandazi, fufu, greens, jollof rice, beans, and chicken! The chapatti dough will be prepared at 5:00 p.m. and all of the food will be cooked at 6:00 p.m. Tea and other drinks will be provided. Instructional African dance will begin at 7:30 p.m. and the party will continue until 9:00 p.m.

For more information, contact: MSUKONGAMANO@GMAIL.COM or visit: <http://kongamano.weebly.com/>.



Michigan State University 2016 G200 Youth Forum and Conference

Garmisch-Partenkirchen, Bavaria, Germany

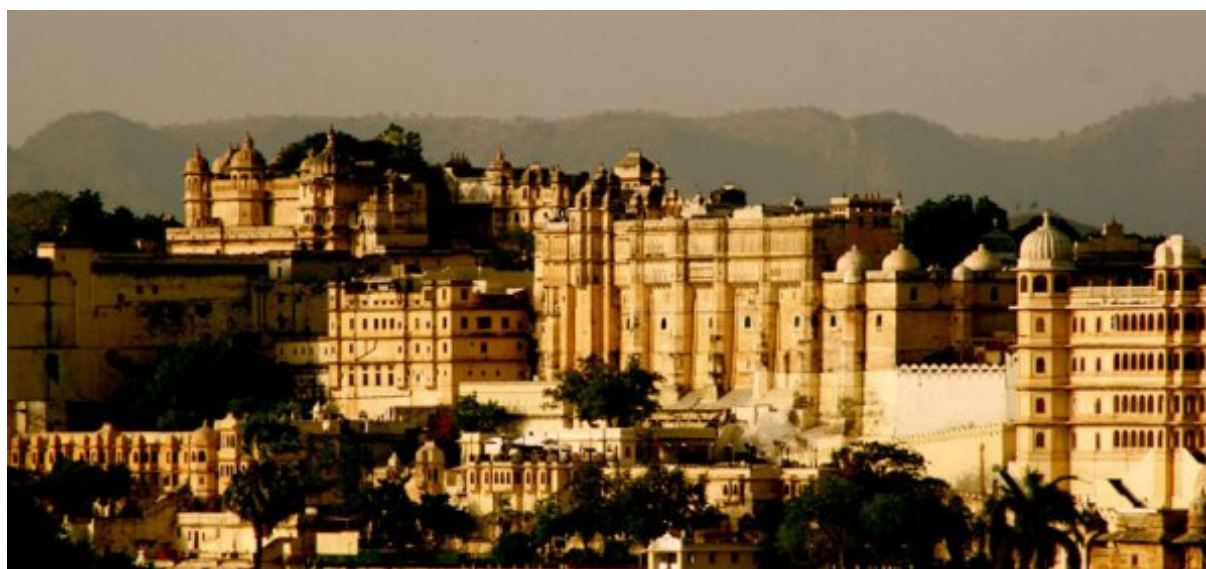
April 6 to 10, 2016

MSU Campus Application Deadline: November 15, 2015

The 11th G200 Youth Forum 2016, sponsored by the G200 Association, will take place in Garmisch-Partenkirchen, Bavaria, Germany from April 6 to 10, 2016. The G200 Youth Forum in 2016 will be one of the largest international events organized for young leaders from about 200 countries. The G200 Youth Forum 2016 would like to invite student and faculty participants for two main events:

1. Conference of the G200 Youth Forum: A maximum of 5 students and 5 faculty from MSU may participate in this event. The event is a conference in which academic articles are presented for subsequent editing into proceedings. The Conference is expected to have 300 participants from 100 top-rated universities to discuss major global problems organized in 8 roundtables. See website for details: <http://www.g200youthforum.org/events/conference>
2. G200 Youth Summit: A maximum of 10 students from MSU may participate in this event. This event functions like a high-level governmental delegation in which students are designated positions like Head of State or a ministers of international affairs, education, environment, finance, culture, etc. See website for details: <http://www.g200youthforum.org/events/summit>

Honors College membership is not required. Students and faculty are encouraged to seek funding from multiple sources. For more information, please contact: Director of International Engagement at the Honors College Kristin Janka Millar, kristin@msu.edu. More information: <http://honorscollege.msu.edu/g200>.



GLOBAL FESTIVAL



2015

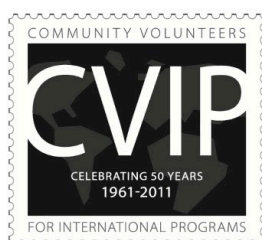
See the world in a day

***Sunday
November 22nd
1-6pm
MSU Union***

- International exhibits
- Live performances
- World Gift Shop
- Children's activities

Performance workshops!

For more information visit
<http://cvip.isp.msu.edu/globalfestival>



MOSAIC

**MICHIGAN STATE
UNIVERSITY**



Office for International
Students and Scholars



**MICHIGAN
STATE
UNIVERSITY**
FEDERAL CREDIT UNION
Building Dreams Together



Greece, Turkey

Greece and Turkey: Contemporary Culture, Politics, and Society

Semester(s) Available:

Summer 2016:

Dates abroad: 05/09/2016 - 06/16/2016

Summer 2016:

Dates abroad: 07/01/2016 - 08/08/2016
(tentative)

Minimum Credits:

Seven (7) for Summer 2016

Seven (7) for Summer 2016

Program Application Deadline(s):

March 1, 2016 for Summer 2016

March 1, 2016 for Summer 2016

For important scholarship deadlines, visit

<http://studyabroad.msu.edu/financing/scholarships/>

Courses:

Multiple course options available; please check the Web for a full list of subject areas.

Requirements:

Minimum GPA 2.00

Cost:

Program Fee: \$4,900.00

Estimated Additional Cost: \$3,330.00
(Summer 2016)

Program Fee: \$4,900.00

Estimated Additional Cost: \$3,330.00
(Summer 2016)

Tuition is not included for most programs.

See program's webpage for details.

Program Contact(s):

Sophia Koufopoulou

Department of Sociology

Phone: 517-355-6640

E-mail: koufopou@msu.edu

Brendan Mullan

Department of Sociology

Phone: 517-355-6640

E-mail: mullan@msu.edu



This interdisciplinary program offers students the opportunity to earn credit through the College of Social Science, including specialized field research, while experiencing Greek, Turkish, and Eastern Mediterranean culture, politics, economy, society, and traditions.

Greek and Turkish societies and cultures are relatively "open" compared with that of northern European countries and North America. Students can take Sociology and ISS classes and will also be exposed to techniques of participant observation and survey data analysis as a research methods. Festivals, rituals, family, household, village, and city customs and practices are all valuable mechanisms for learning the social, economic, cultural, political, and religious activities and traditions that make a society definable, distinctive, and durable. Students will also explore and understand the causes, content, and consequences of the current economic crisis and associated social turmoil in Greece.

Students expand and enhance their formal in-class lectures through field trips. Four field trips (two on the island of Lesbos, one to Athens, and to neighboring western Turkey) have been explicitly written into the course requirements for successful completion of this program. These field trips will give MSU students a broad exposure to Greek, Turkish, and Eastern Mediterranean history, culture, and society.

The program fee includes students' housing and most meals, class activities, and several day and overnight excursions. In addition, students will be enrolled in a comprehensive study abroad health insurance policy, the cost of which is also included in the program fee.

NOTE: Greek language is not required for this program. Instruction will be in English. Short, optional "survival Greek" sessions will be offered as part of the course to enhance students' immersion in and understanding of Greek culture.

More details about this program can be found at...
<http://osa.isp.msu.edu/Programs/greecesocialsci.html>

This flyer is intended to provide an overview of this study abroad program. Interested students should visit the program's Web page (URL indicated above) for further details such as specific course and cost information. Program fees, dates, and arrangements are subject to change, due to unforeseen considerations.

DATE PRINTED
10/12/2015





Department of
Community Sustainability

Spring 2016

**Community Based Natural Resource
Management in International Development
CSUS 848**

3 credits

Millions of people around the world depend on natural resources for their livelihood. This course covers rural natural resource management in developing countries, focusing on the factors that lead to positive natural resource outcomes, e.g. conservation, increased productivity, and improved income distribution. The course begins with a look at how human and natural systems interact, and possible ways to study that interaction. The course then addresses a variety of issues that influence natural resource management including people's perceptions of natural resource scarcity, poverty, population density, tenure security, property rights regimes, collective action and its determinants, and governance. It also examines policy approaches for promoting conservation where benefits are off-site.

The course is appropriate for graduate students around campus that are interested in learning or doing research on community-based natural resource management in developing countries. It is also useful for students that are working on natural resource management in developed countries since they may use the findings from developing countries to examine these other contexts with new ideas.

This course is useful for students who have an interest in International Development and Natural Resource Management and want either to do research on these topics or are considering working in these areas.

Maria Lopez (mlopez@msu.edu)
Assistant Professor
Community Sustainability
Thursday 3:00 – 5:50 pm
001 Natural Resources Building



MICHIGAN STATE
UNIVERSITY

Center for Advanced Study of
International Development
427 North Shaw Lane
International Center
Room 202
East Lansing, MI
48824-1035
(517) 353-5925

www.casid.msu.edu

